



Save 10%
on Exam
Voucher

See Inside

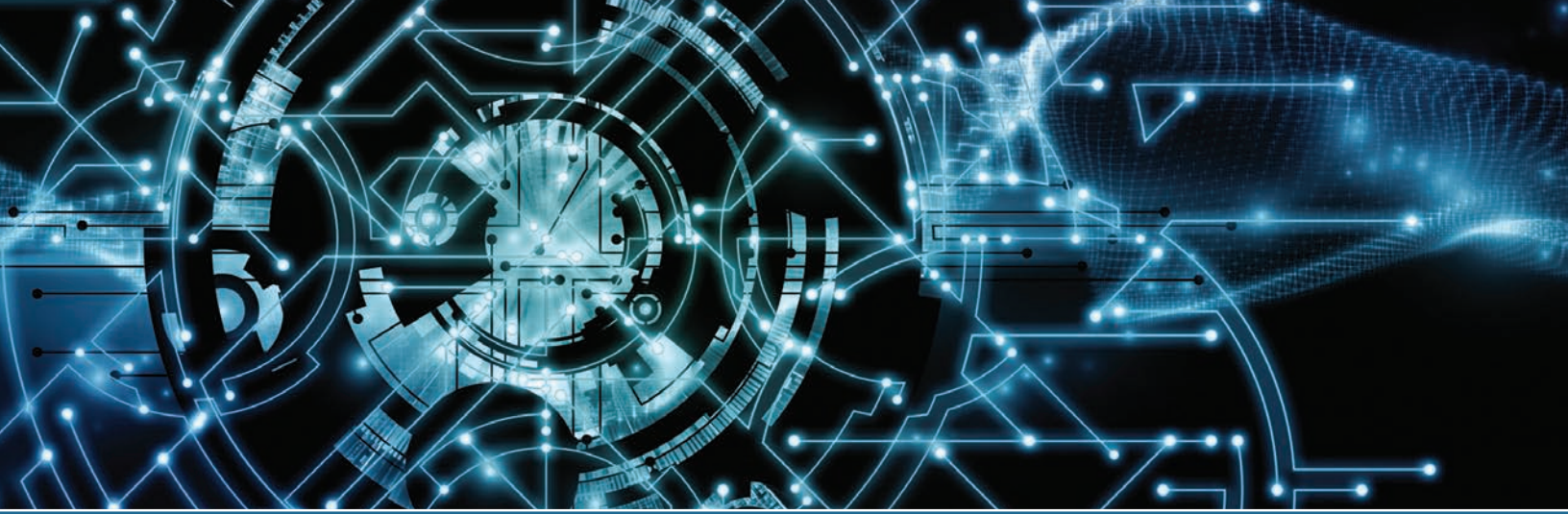
LAB MANUAL



COMPLETE A+ GUIDE TO IT HARDWARE AND SOFTWARE

A CompTIA® A+ Core 1 (220-1001) &
A CompTIA® A+ Core 2 (220-1002) Lab Manual

CHERYL A. SCHMIDT



Complete A+ Guide to IT Hardware and Software Lab Manual

A CompTIA A+ Core 1 (220-1001) & CompTIA
A+ Core 2 (220-1002) Lab Manual

EIGHTH EDITION

CHERYL A. SCHMIDT

FLORIDA STATE COLLEGE AT JACKSONVILLE

PEARSON IT
CERTIFICATION

Complete A+ Guide to IT Hardware and Software Lab Manual: A CompTIA A+ Core 1 (220-1001) & CompTIA A+ Core 2 (220-1002) Lab Manual

Table of Contents

Cover

Title Page

Copyright Page

Contents at a Glance

Contents

Introduction

Chapter 1: Introduction to the World of IT Labs

Lab 1.1 Getting Started in Windows 7

Lab 1.2 Getting Started in Windows 8

Lab 1.3 Getting Started in Windows 10

Lab 1.4 Using a Search Engine

Lab 1.5 Performing a Screen Capture with Snipping Tool

Lab 1.6 Creating a Text File

Chapter 2: Connectivity Labs

Lab 2.1 Identifying Ports

Lab 2.2 Identifying Devices/Ports

Chapter 3: On the Motherboard Labs

Lab 3.1 Using Windows to Discover Processor Information

Lab 3.2 Identifying Processor Speed, Processor Socket, and Ports

Chapter 4: Introduction to Configuration Labs

Lab 4.1 Determining the Configuration Method

Lab 4.2 Examining BIOS/UEFI Options

Lab 4.3 Accessing BIOS/UEFI Through Windows 8 or 10

Lab 4.4 Configuring System Resources Through the Setup Program

Lab 4.5 Examining System Resources by Using Windows

Lab 4.6 Becoming Familiar with Device Drivers

Chapter 5: Disassembly and Power Labs

Table of Contents

Lab 5.1 Performing Maintenance on an Antistatic Wrist Strap

Lab 5.2 Disassembling and Reassembling a Computer

Lab 5.3 Determining Amps and Wattage

Lab 5.4 Performing a Continuity Check

Lab 5.5 Drawing a Pin-Out Diagram

Lab 5.6 Checking a Fuse

Lab 5.7 Using a Multimeter

Lab 5.8 Checking Wall Outlet and Power Cord AC Voltage

Lab 5.9 Checking Device DC Voltage

Lab 5.10 Using a Power Supply Tester

Lab 5.11 Understanding the Windows 7 Power Options

Lab 5.12 Understanding the Windows 8/10 Power Options

Chapter 6: Memory Labs

Lab 6.1 Examining Memory Resources Using Device Manager in Windows 7/8

Lab 6.2 Examining Memory Resources Using Device Manager in Windows 10

Lab 6.3 Using the System Information Tool in Windows 7 to View Memory

Lab 6.4 Using the System Information Tool in Windows 8/10 to View Memory

Lab 6.5 Using Windows 7 Task Manager to View Memory

Lab 6.6 Using Windows 8/10 Task Manager to View Memory

Lab 6.7 Installing RAM

Chapter 7: Storage Devices Labs

Lab 7.1 Installing a Second PATA Hard Drive and Creating Two Volumes

Lab 7.2 Installing a Second SATA Hard Drive and Creating Two Volumes

Lab 7.3 Installing an External Hard Drive and Creating Two Volumes

Lab 7.4 Installing a PATA/SATA Hard Drive with the Windows 7/8/10 Disk Management Tool, diskpart, and convert

Lab 7.5 Striping and Spanning Using Windows

Lab 7.6 Windows 7 Hard Disk Tools

Lab 7.7 Windows 8/10 Hard Disk Tools

Lab 7.8 Windows 8/10 Storage Spaces

Chapter 8: Multimedia Devices Labs

Lab 8.1 Managing Sound and Optical Drives in Windows

Lab 8.2 Installing an Optical Drive

Lab 8.3 Using DirectX for Diagnostics in Windows 7, 8, or 10

Table of Contents

Lab 8.4 Installing a Sound Card and Speakers in Windows 7, 8, or 10

Lab 8.5 Installing a USB Scanner

Lab 8.6 Changing the Drive Letter of an Optical Drive by Using Disk Management and the diskpart Utility

Chapter 9: Printers Labs

Lab 9.1 Installing a Generic/Text-Only Print Driver on a Windows 7, 8, or 10 Computer

Lab 9.2 Installing a Local Printer on a Windows 7, 8, or 10 Computer

Lab 9.3 Exploring a Windows 7, 8, or 10 Printer

Chapter 10: Mobile Devices Labs

Lab 10.1 Backing Up an iOS Device to a PC or Mac by Using iTunes

Lab 10.2 Determining Memory Resources in an iOS-Based Device

Lab 10.3 Determining Memory Resources in an Android-Based Device

Lab 10.4 Managing Files on a Mobile Device

Lab 10.5 Connecting a Mobile Device to a WiFi Network

Chapter 11: Computer Design and Troubleshooting Review Labs

Lab 11.1 Logical Troubleshooting

Lab 11.2 Designing a Computer Subsystem

Chapter 12: Internet Connectivity, Virtualization, and Cloud Technologies Labs

Lab 12.1 Exploring Serial Devices in Windows 7

Lab 12.2 Installing a Windows 7 Internal or External Modem

Lab 12.3 Introduction to Internet Explorer (IE) Configuration

Lab 12.4 Verifying Computer Support for Microsoft Hyper-V Virtualization

Lab 12.5 Installing Another Operating System Within Microsoft Hyper-V

Lab 12.6 Introduction to Amazon AWS Cloud

Lab 12.7 Installing VMware Workstation

Lab 12.8 Installing Windows and Ubuntu as a VMware Workstation Virtual Machine

Lab 12.9 Installing VirtualBox

Chapter 13: Networking Labs

Lab 13.1 Creating a Straight-Through CAT 5, 5e, or 6 Network Patch Cable

Lab 13.2 Creating a CAT 5, 5e, or 6 Crossover Network Cable

Lab 13.3 Exploring NIC Properties with Windows 7, 8, or 10

Table of Contents

- Lab 13.4 Networking with Windows 7, 8, or 10
- Lab 13.5 Connecting to a Windows 7 Shared or Networked Printer
- Lab 13.6 Connecting to a Windows 8 Shared or Networked Printer
- Lab 13.7 Connecting to a Windows 10 Shared or Networked Printer
- Lab 13.8 Installing a Wireless NIC
- Lab 13.9 Configuring a Wireless Network
- Lab 13.10 Using an FTP Server and Client

Chapter 14: Introduction to Operating Systems Labs

- Lab 14.1 Windows 7 Basic Usage
- Lab 14.2 Modifying the Windows 7 Start Button
- Lab 14.3 Windows 8/8.1 Basic Usage: Introduction to the Start Screen
- Lab 14.4 Windows 8/8.1 Basic Usage: Introduction to PC Settings
- Lab 14.5 Windows 8/8.1 Basic Usage: Working with the Traditional Desktop and Control Panel Utilities
- Lab 14.6 Windows 10 Basic Usage: Introduction to the Start Screen
- Lab 14.7 Windows 10 Basic Usage: Introduction to Settings
- Lab 14.8 Windows 10 Basic Usage: Working with Control Panel Utilities
- Lab 14.9 Windows 7 Taskbar Options
- Lab 14.10 Windows 8/8.1 Taskbar Options
- Lab 14.11 Windows 10 Taskbar Options
- Lab 14.12 Windows 7 File and Folder Management
- Lab 14.13 Windows 8/8.1/10 File and Folder Management
- Lab 14.14 Windows 7 File Extension
- Lab 14.15 Windows 8/8.1/10 File Extension
- Lab 14.16 Windows 7/8//10 Attributes, Compression, and Encryption
- Lab 14.17 Using regedit in Windows 7/8/8.1/10
- Lab 14.18 Windows 7 Backup Tool
- Lab 14.19 Windows 8/8.1 File History Utility
- Lab 14.20 Windows 10 File History Utility
- Lab 14.21 Creating a Windows 7 System Repair Disc
- Lab 14.22 Creating a Windows 7 System Image Disc
- Lab 14.23 Creating a Windows 8/8.1/10 System Recovery Drive

Chapter 15: Introduction to Scripting Labs

Table of Contents

- Lab 15.1 Using Basic Commands from a Command Prompt
- Lab 15.2 Using the copy, md, del, and rd Commands
- Lab 15.3 Using the attrib Command and Moving Around in the Directory Structure
- Lab 15.4 Windows 7/10 Backup Software and the Archive Bit
- Lab 15.5 Setting Windows Environment Variables
- Lab 15.6 Creating a Batch File
- Lab 15.7 Windows 7/10 Backup Software
- Lab 15.8 Introduction to PowerShell
- Lab 15.9 Introduction to Python Scripting
- Lab 15.10 Introduction to JavaScript

Chapter 16: Advanced Windows Labs

- Lab 16.1 Windows 7 Installation
- Lab 16.2 Windows 8/8.1 Installation
- Lab 16.3 Windows 10 Installation
- Lab 16.4 Windows 8/8.1 Upgrade
- Lab 16.5 Windows 10 Upgrade
- Lab 16.6 Windows Registry Modification
- Lab 16.7 Windows 7 Backup
- Lab 16.8 Windows Update Utility
- Lab 16.9 Configuring Windows 7, 8, 8.1, and 10 for Ease of Access
- Lab 16.10 Windows 7/8/8.1 System Restore Utility
- Lab 16.11 Windows 10 System Restore Utility
- Lab 16.12 Upgrading a Hardware Driver and Using Driver Roll Back
- Lab 16.13 Disabling a Hardware Driver
- Lab 16.14 Installing Hardware
- Lab 16.15 Installing and Removing Windows Components
- Lab 16.16 Microsoft Management Console
- Lab 16.17 Exploring Windows Boot Options
- Lab 16.18 Windows System Configuration Utility
- Lab 16.19 Halting an Application Using Task Manager
- Lab 16.20 Task Manager Features in Windows 8, 8.1, or 10
- Lab 16.21 Using Event Viewer
- Lab 16.22 Using Task Manager to View Performance

Table of Contents

Lab 16.23 Performance and Reliability

Lab 16.24 Windows Remote Desktop Connection

Lab 16.25 Windows Task Scheduler

Lab 16.26 Windows Steps Recorder

Chapter 17: macOS and Linux Operating Systems Labs

Lab 17.1 Using the macOS Graphical User Interface

Lab 17.2 Introduction to macOS System Preferences

Lab 17.3 Using the macOS Terminal and Time Machine

Lab 17.4 Using Ubuntu Live DVD

Lab 17.5 Creating a Bootable Ubuntu USB Flash Drive Using macOS

Lab 17.6 Linux Command-Line Basics

Lab 17.7 Ubuntu Command-Line Challenge

Chapter 18: Computer and Network Security Labs

Lab 18.1 Encrypting a File and Folder in Windows

Lab 18.2 Using Windows 7/8/10 System Protection

Lab 18.3 Sharing a Folder in Windows 7

Lab 18.4 Sharing a Folder in Windows 8/10

Lab 18.5 Creating a Local Security Policy for Passwords

Lab 18.6 Creating a Local Security Policy for Passwords in Windows 8/10

Lab 18.7 Using Windows Defender in Windows 7

Lab 18.8 Using Windows Defender in Windows 8/10

Lab 18.9 Sharing Files with Windows 8/10 Public Folders

Lab 18.10 Configuring a Secure Wireless Network

Lab 18.11 Configuring Windows 7, 8, or 10 with a DNS Server IP Address