

Adobe Illustrator

2025 Release



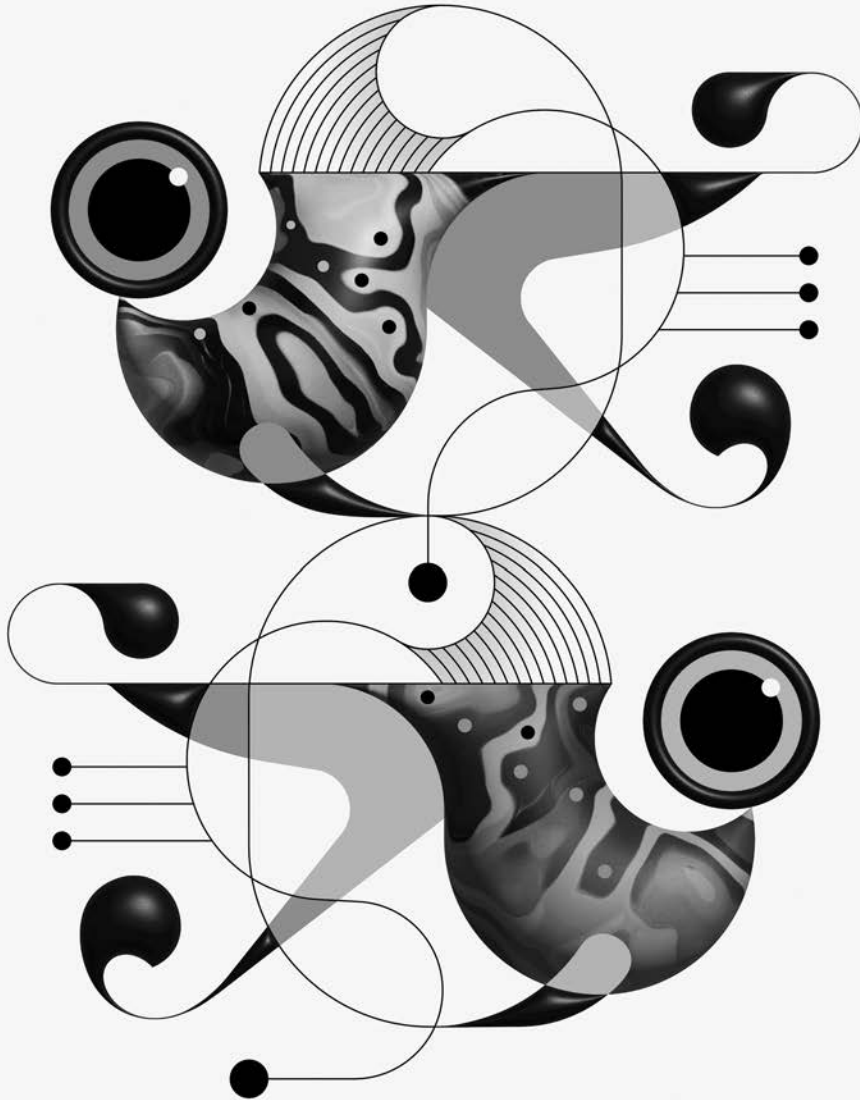
Classroom in a Book®

The official training workbook from Adobe

Brian Wood

Adobe Illustrator

2025 Release



Classroom in a Book®

The official training workbook from Adobe

Brian Wood

Adobe Illustrator Classroom in a Book 2025 Release

Table of Contents

Cover

Title Page

Copyright Page

WHERE ARE THE LESSON FILES?

CONTENTS

GETTING STARTED

- About Classroom in a Book

- Prerequisites

- Installing the program

- Fonts used in this book

- Online Content

 - Lesson files

 - Web Edition

 - Accessing the lesson files and Web Edition

- Restoring default preferences

 - To reset the current Illustrator preferences

- Additional resources

WHATS NEW IN ADOBE ILLUSTRATOR 2025 RELEASE

- Objects on Path

- Text to Vector Graphic improvements

- Gen Shape Fill (Beta)

Table of Contents

Mockup improvements

Star as a Live Shape

A QUICK TOUR OF ADOBE ILLUSTRATOR 2025 RELEASE

Starting the lesson

Saving the document

Creating shapes

- Resizing shapes

- Copying shapes

- Rounding corners

- Combining shapes using the Shape Builder tool

- Rounding a few corners

- Applying and editing color

- Practice making a leaf

- Transforming the leaf

Applying a gradient

- Practice applying a gradient

Creating with the Curvature tool

Applying a brush

Working with type

- Grouping content

- Curving text

- Formatting the text

Working with effects

- Finishing your sticker

1 GETTING TO KNOW THE WORK AREA

Welcome to Adobe Illustrator!

Opening an Illustrator file

Exploring the workspace

Table of Contents

Getting to know the tools

Working with the Properties panel

Exploring the Contextual Task Bar

Finding more tools

Working with panels

Moving and docking panels

Switching and resetting workspaces

Using panel and context menus

Changing the view of artwork

Using view commands

Using the Zoom tool

Panning in a document

Rotating the view

Viewing artwork

Navigating multiple artboards

2 TECHNIQUES FOR SELECTING ARTWORK

Starting the lesson

Selecting objects

Using the Selection tool

Selecting and editing with the Direct Selection tool

Selecting with a marquee

Locking objects

Unlocking objects

Selecting similar objects

Hiding objects

Selecting in Outline mode

Aligning objects

Aligning objects to each other

Aligning to a key object

Table of Contents

Distributing objects

Aligning anchor points

Aligning to the artboard

Aligning objects to a path

Editing the objects on the path

Working with groups

Grouping items

Editing a group in Isolation mode

Exploring object arrangement

Arranging objects

3 MAKE A LOGO WITH SHAPES

Starting the lesson

Creating a new document

Saving your document

Working with basic shapes

Creating rectangles

Editing rectangles

Changing the color of the shapes

Rounding rectangle corners by dragging

Rounding individual corners

Changing a corner type

Creating an ellipse

Editing an ellipse

Changing stroke alignment

Creating a pie shape from an ellipse

Drawing lines

Editing a line

Creating polygons

Editing a polygon

Table of Contents

Creating a star

Working with drawing modes

Using Draw Inside mode

Practicing with Draw Inside mode

Editing content drawn inside

Pasting artwork between documents

Using Image Trace to convert images into editable vector art

Cleaning up traced artwork

Adding the text and bear logo to the flyer

Using Text To Vector Graphic (Beta)

4 EDITING AND COMBINING SHAPES AND PATHS

Starting the lesson

Editing paths and shapes

Cutting with the Scissors tool

Joining paths

Cutting with the Knife tool

Cutting in a straight line with the Knife tool

Using the Eraser tool

Erasing in a straight line

Creating a compound path

Outlining strokes

Combining shapes

Working with the Shape Builder tool

Combining objects using Pathfinder effects

Understanding shape modes

Reshaping a path

Using the Width tool

Using Intertwine

Table of Contents

Assembling the sign

Assembling the poster

5 TRANSFORMING ARTWORK

Starting the lesson

How can you use artboards?

Creating and editing artboards

- Creating a new artboard

- Copying artboards between documents

- Moving and resizing artboards

- Aligning and arranging artboards

- Setting options for artboards

Working with rulers and guides

- Creating guides

Transforming content

- Working with the bounding box

- Positioning artwork using the Properties panel

- Scaling objects precisely

- Rotating objects with the Rotate tool

- Scaling using Transform Each

- Shearing objects

- Transforming using menu commands

Using repeats

- Applying a mirror repeat

- Editing a mirror repeat

Working with the Puppet Warp tool

- Adding pins

- Rotating pins

Introducing the Dimension tool

Table of Contents

6 USING THE BASIC DRAWING TOOLS

Starting the lesson

Creating with the Curvature tool

Drawing paths with the Curvature tool

Editing the path with the Curvature tool

Joining the paths with the Join tool

Finishing the social graphic

Creating corners with the Curvature tool

Practicing with the Curvature tool

Finishing the mug handle

Creating with the Pencil tool

Drawing paths with the Pencil tool

Creating dashed lines

Adding arrowheads to paths

Practicing adding arrowheads

7 DRAWING WITH THE PEN TOOL

Starting the lesson

Why use the Pen tool?

Starting with the Pen tool

Creating straight lines to make a crown

Continuing to draw a path

Practicing by making another crown!

Drawing a house with the Pen tool

Practicing by making another house!

Exploring curved paths

Drawing a curve with the Pen tool

Practicing by creating more curves!

Drawing a series of curves with the Pen tool

Table of Contents

Practicing by creating continuous curves!

Changing path direction

Practicing by creating more curves!

Combining curves and straight lines

Practicing by making the other sail!

Practicing by creating more curves!

Putting your learning into practice

Editing paths and points further

Deleting and adding anchor points

Converting between smooth points and corner points

Converting anchor points with the Anchor Point tool

8 USING COLOR TO ENHANCE ARTWORK

Starting the lesson

Exploring color modes

Working with color

Applying an existing color

Making a custom color

Saving a color as a swatch

Editing the global swatch

Editing a non-global swatch

Using the Color Picker to create color

Using Illustrator swatch libraries

Creating and saving a tint

Copying appearance attributes

Using the Color Guide panel for creative inspiration

Applying colors from the Color Guide panel

Using Recolor Artwork to edit colors in artwork

Recoloring artwork

Sampling color in Recolor Artwork

Table of Contents

Making color variations with sample prompts using Generative Recolor

Making color variations with custom prompts using Generative Recolor

Working with Live Paint

Creating a Live Paint group

Painting with the Live Paint Bucket tool

Modifying a Live Paint group

9 ADDING TYPE TO A PROJECT

Starting the lesson

Adding text

Adding text at a point

Adding area type

Converting between area type and point type

Importing a plain-text file

Threading text

Formatting type

Changing font family and font style

Activating Adobe Fonts

Applying fonts to text in Illustrator

Changing font size

Changing the color of text

Changing additional character formatting

Changing paragraph formatting

Vertically aligning area type

Resizing and reshaping type objects

Creating columns of text

Reshaping type objects

Creating and applying text styles

Creating and applying a paragraph style

Sampling text formatting

Table of Contents

Practicing paragraph styles

Editing a paragraph style

Creating text lists

Applying text lists

Editing text lists

Wrapping text

Curving text on a path

Warping text

Reshaping text with a preset envelope warp

Editing the content of the envelope warp

Creating text outlines

Exploring Retype (Beta)

10 ORGANIZING YOUR PROJECT WITH LAYERS

Starting the lesson

Understanding layers

Creating layers

Creating a sublayer

Editing layers and objects

Locating content in the Layers panel

Dragging content between layers

Trying another method for dragging content to a layer

Locking and hiding layers

Reordering layers and content

Viewing individual layers or objects as outlines

Pasting layers from another document

Merging layers into a new layer

Searching and filtering layers

Creating a clipping mask

Table of Contents

11 GRADIENTS, BLENDS, AND PATTERNS

Starting the lesson

Working with gradients

- Applying a linear gradient to a fill

- Editing a gradient color

- Saving a gradient as a swatch

- Adjusting a linear gradient fill

- Applying a linear gradient to a stroke

- Editing a gradient on a stroke

- Applying a radial gradient to artwork

- Editing the colors in the radial gradient

- Adjusting the radial gradient

- Applying gradients to multiple objects

- Adding transparency to gradients

- Applying a freeform gradient

- Editing a freeform gradient in Points mode

- Applying color stops in Lines mode

Creating blends

- Creating a blend with specified steps

- Modifying a blend

- Creating a smooth color blend

- Editing a smooth color blend

Getting creative with patterns

- Applying an existing pattern

- Creating your own pattern

- Applying your pattern

- Editing your pattern

- Putting it all together

12 USING BRUSHES TO CREATE AN AD

Table of Contents

Starting the lesson

Working with brushes

Using Calligraphic brushes

- Applying a Calligraphic brush to artwork

- Editing a brush

- Drawing with the Paintbrush tool

- Editing paths with the Paintbrush tool

- Smoothing with the Paintbrush tool

- Editing the Paintbrush tool options

- Removing a brush stroke

Using Art brushes

- Applying an existing Art brush

- Creating an Art brush

- Editing an Art brush

Using Pattern brushes

- Creating a Pattern brush

- Applying the Pattern brush

- Editing a Pattern brush

Using Bristle brushes

- Changing Bristle brush options

- Painting with a Bristle brush

- Grouping Bristle brush paths

Working with the Blob Brush tool

- Drawing with the Blob Brush tool

- Editing with the Eraser tool

13 EXPLORING CREATIVE USES OF EFFECTS AND GRAPHIC STYLES

Starting the lesson

Table of Contents

Using the Appearance panel

- Editing appearance attributes
- Adding another fill to content
- Adding multiple strokes and fills to text
- Reordering appearance attributes

Using live effects

- Applying an effect
- Editing an effect
- Styling text with a Warp effect
- Temporarily disabling effects to make edits

Applying a Photoshop effect

Applying 3D effects

Using graphic styles

- Creating and applying a graphic style
- Updating a graphic style
- Applying a graphic style to a layer

Scaling strokes and effects

14 EXPLORING TIME-SAVING TECHNIQUES

Starting the lesson

Working with symbols

- Using default Illustrator symbol libraries
- Transforming symbol instances
- Editing a symbol
- Working with dynamic symbols
- Creating a symbol
- Practice editing a symbol
- Breaking a link to a symbol
- Replacing symbols

Working with Creative Cloud libraries

Table of Contents

Adding assets to a Creative Cloud library

Using library assets

Updating a library asset

Creating a mockup

Working with global editing

15 PLACING AND WORKING WITH IMAGES

Starting the lesson

Placing image files

Placing an image

Transforming a placed image

Cropping an image

Placing a Photoshop document

Placing multiple images

Masking content

Masking content with a shape

Exploring the mask you made

Editing the mask and image

Automatic masking for an image

Editing the image mask

Creating an opacity mask

Editing an opacity mask

Working with image links

Finding link information

Embedding and unembedding images

16 SHARING PROJECTS

Starting the lesson

Fixing the missing image link

Packaging a file

Table of Contents

Creating a PDF

Exporting artboards and assets

Exporting artboards

Exporting assets

Inviting others to edit

Sharing for review

INDEX

Contributors

Production Notes