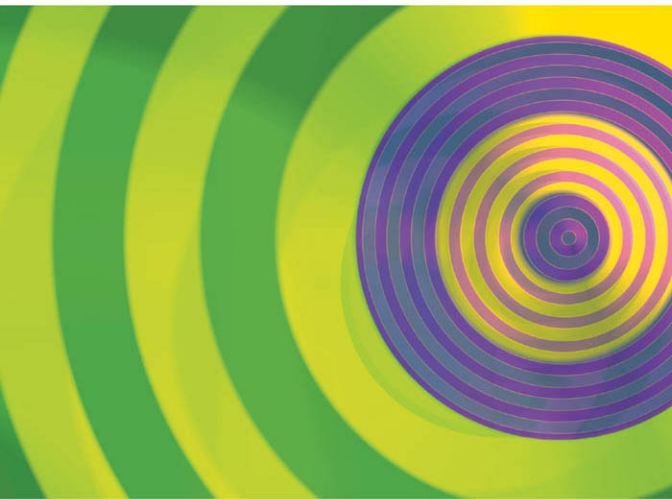


Pearson New International Edition



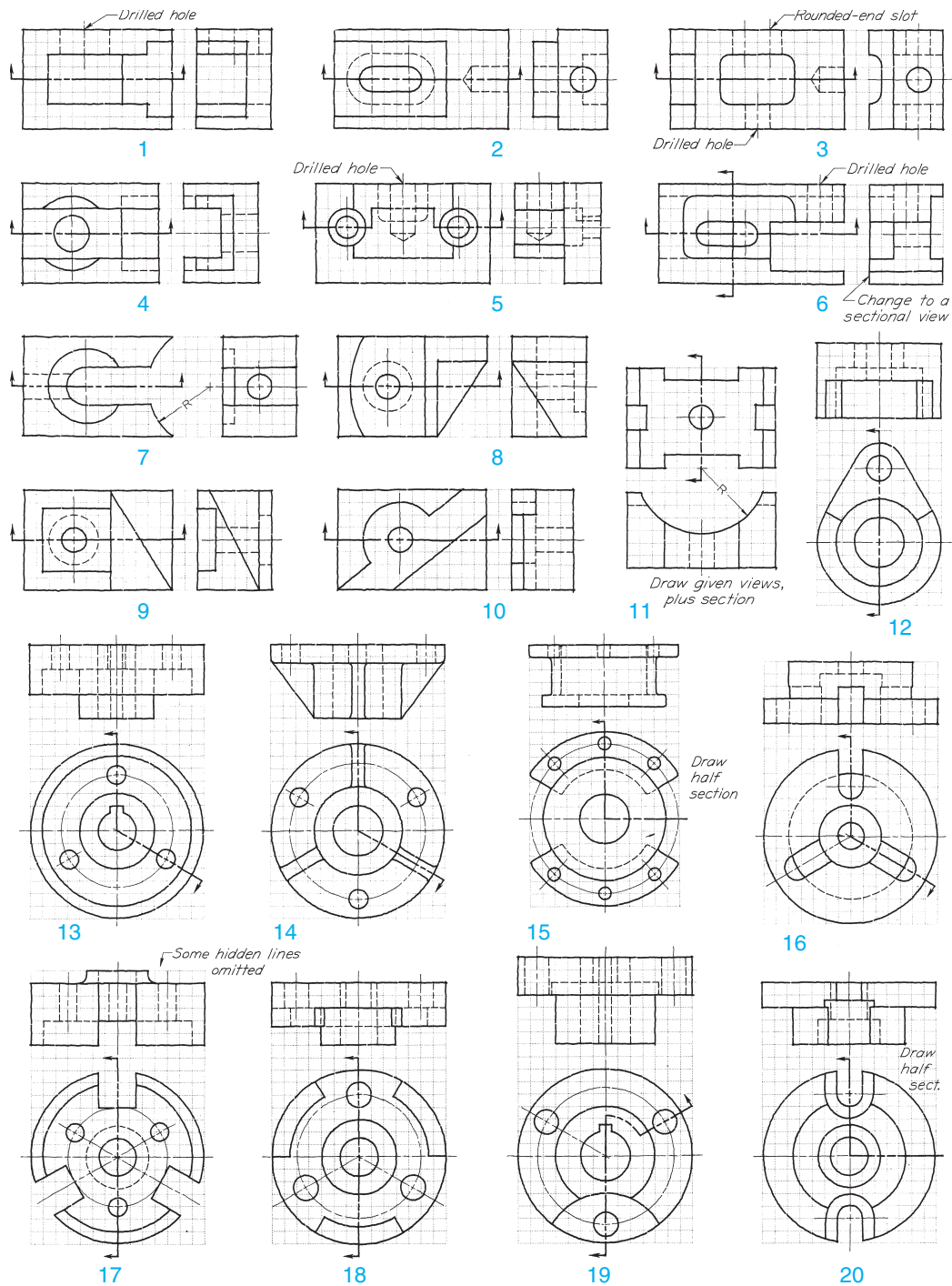
Engineering Graphics
Giesecke Mitchell Spencer
Hill Dygdon Novak Loving
Eighth Edition

Pearson New International Edition

Engineering Graphics
Giesecke Mitchell Spencer
Hill Dygdon Novak Loving
Eighth Edition

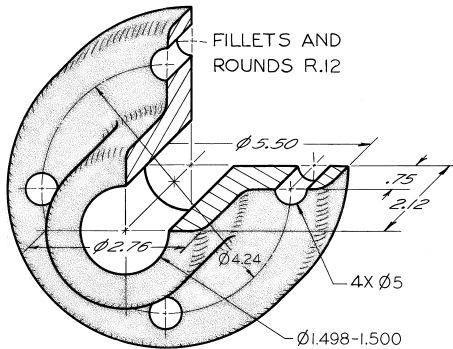
PEARSON

Sectional Views

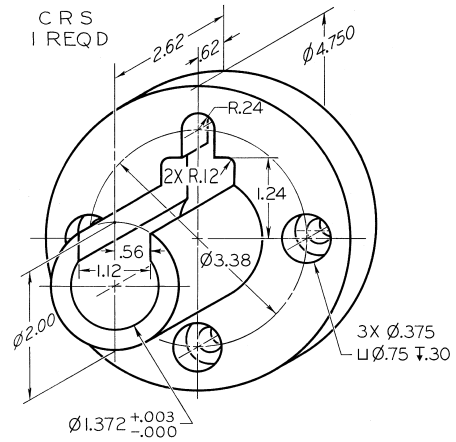


■ **FIGURE 40** ■ Freehand Sectioning Problems. Using Layout A-1 or A4-1 adjusted (freehand) on graph paper or plain paper, two problems per sheet, sketch views with sections as indicated. Each grid square = 6 mm ($\frac{1}{4}$ in.). In Probs. 1–10, top and right-side views are given. Sketch front sectional views and then move right-side views to line up horizontally with front sectional views. Omit cutting planes except in Probs. 5 and 6.

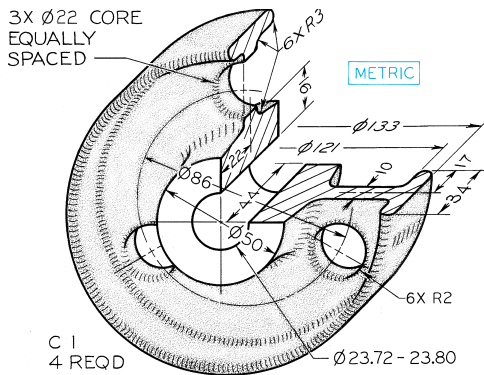
Sectional Views



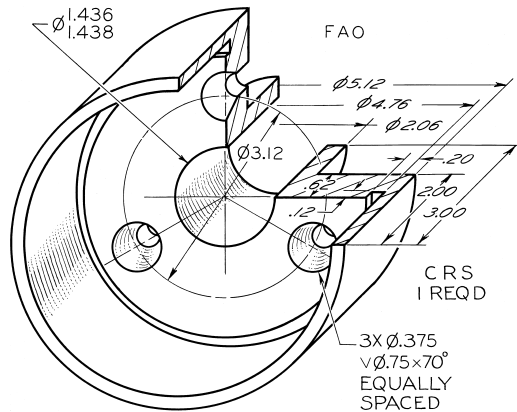
■ **FIGURE 41** ■ Bearing. Draw necessary views, with full section (Layout A-3).*



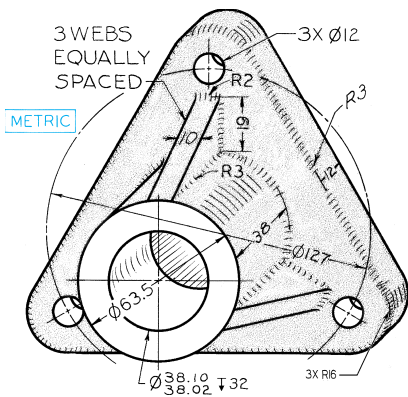
■ **FIGURE 44** ■ Centering Bushing. Draw necessary views, with full section (Layout A-3).*



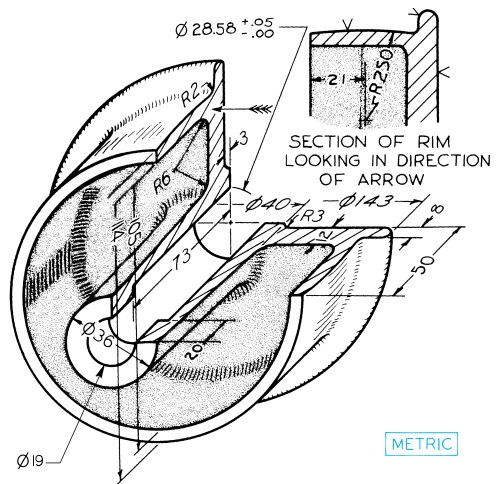
■ **FIGURE 42** ■ Truck Wheel. Draw necessary views, with half section (Layout A-3).*



■ **FIGURE 45** ■ Special Bearing. Draw necessary views, with full section (Layout A-3).*



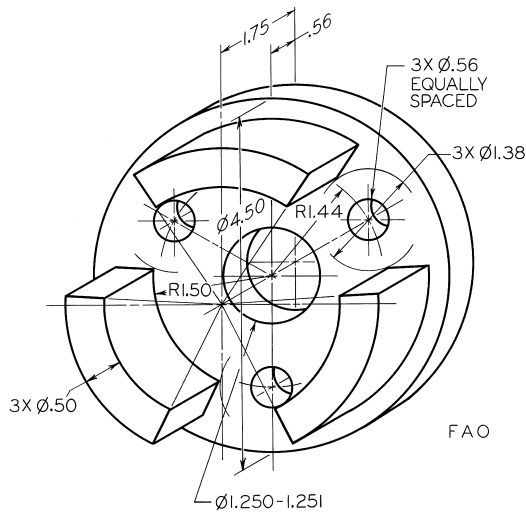
■ **FIGURE 43** ■ Column Support. Draw necessary views, with full section (Layout A-3).*



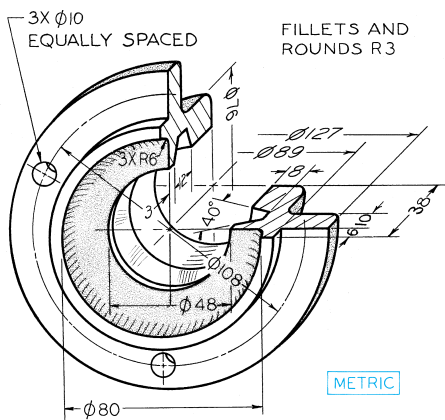
■ **FIGURE 46** ■ Idler Pulley. Draw necessary views, with full section (Layout A–3).*

**Layout A4-3 (adjusted) may be used. Use metric or decimal-inch dimensions as assigned by the instructor.*

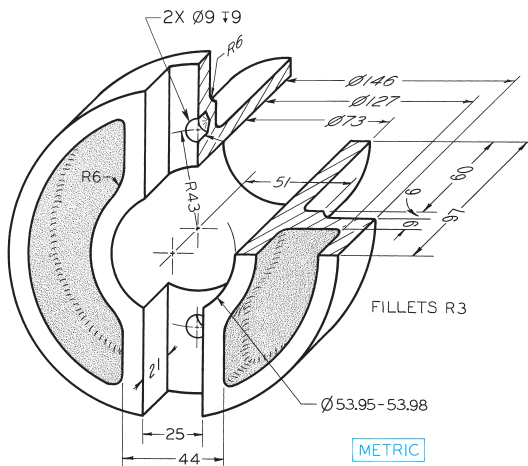
Sectional Views



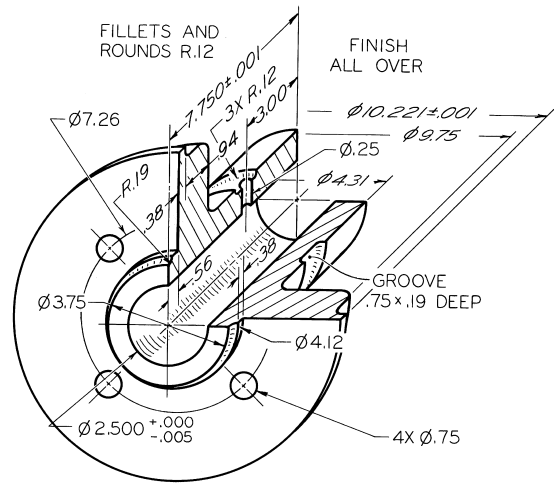
■ **FIGURE 47** ■ Cup Washer. Draw necessary views, with full section (Layout A-3 or A4-3 adjusted).*



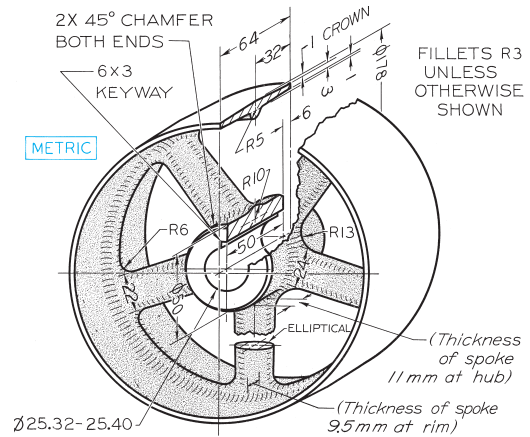
■ **FIGURE 48** ■ Fixed Bearing Cup. Draw necessary views, with full section (Layout A-3 or A4-3 adjusted).*



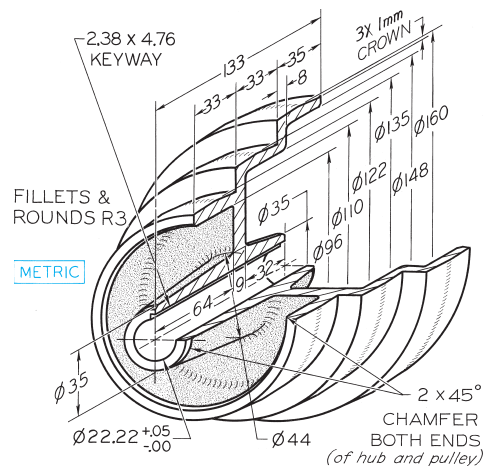
■ **FIGURE 49** ■ Stock Guide. Draw necessary views, with half section (Layout B-4 or A3-4 adjusted).*



■ **FIGURE 50** ■ Bearing. Draw necessary views, with half section. Scale: half size (Layout B-4 or A3-4 adjusted).*



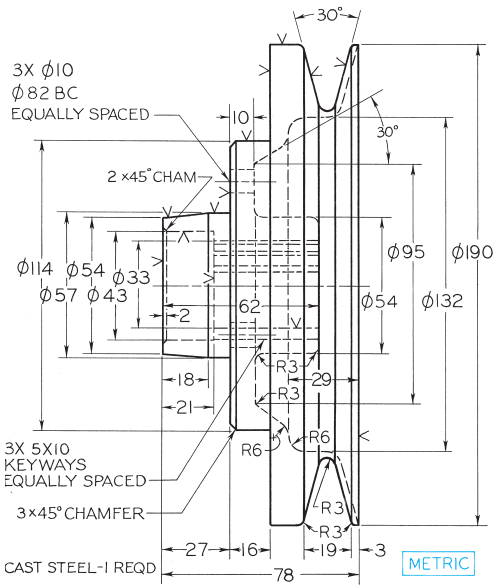
■ **FIGURE 51** ■ Pulley. Draw necessary views, with full section, and revolved section of spoke (Layout B-4 or A3-4 adjusted).*



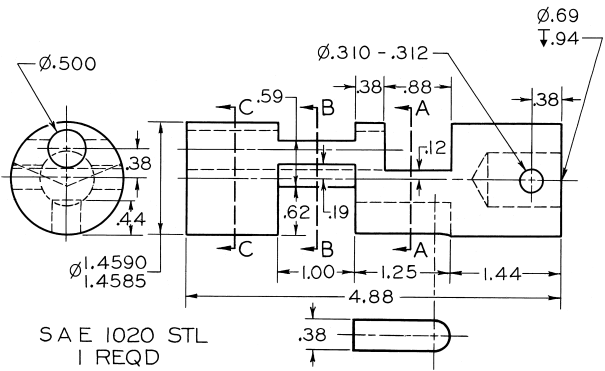
■ **FIGURE 52** ■ Step-Cone Pulley. Draw necessary views, with full section (Layout B-4 or A3-4 adjusted).*

*Use metric or decimal-inch dimensions as assigned by the instructor.

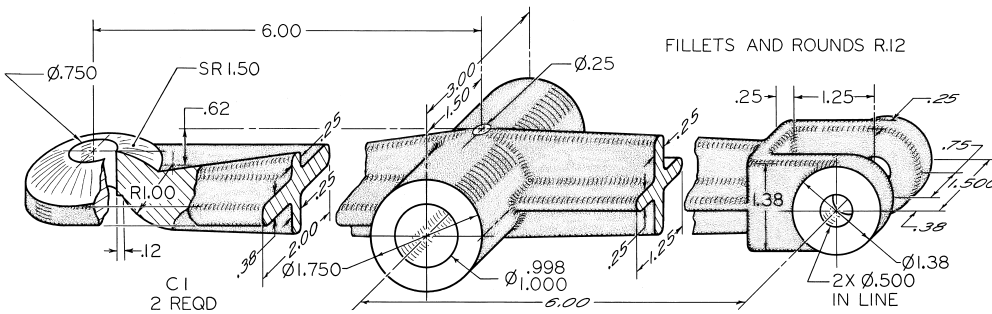
Sectional Views



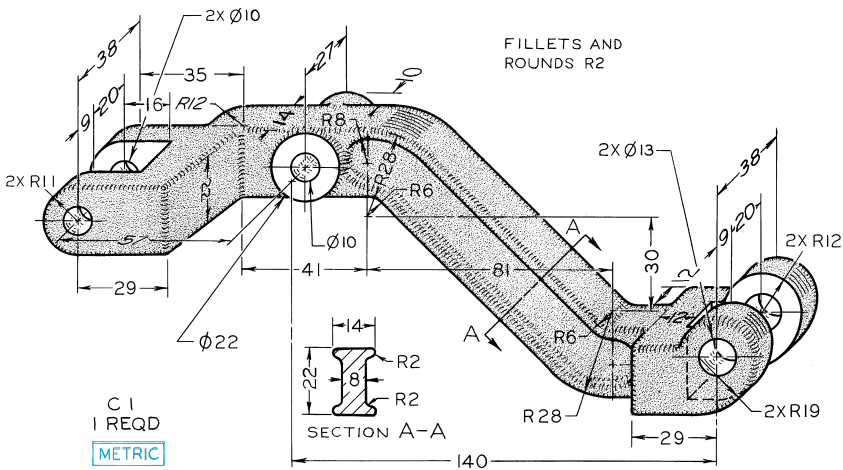
■ **FIGURE 53** ■ Sheave. Draw two views, including half section (Layout B-4).*



■ **FIGURE 54** ■ Operating Valve. Given: Front, left-side, and partial bottom views. Required: Front, right-side, and full bottom views, plus indicated removed sections (Layout B-4).*



■ **FIGURE 55** ■ Rocker Arm. Draw necessary views, with revolved sections (Layout B-4).*



■ **FIGURE 56** ■ Dash Pot Lifter. Draw necessary views, using revolved section instead of removed section (Layout B-4).*

**Layout A3-4 (adjusted) may be used. Use metric or decimal-inch dimensions as assigned by the instructor.*

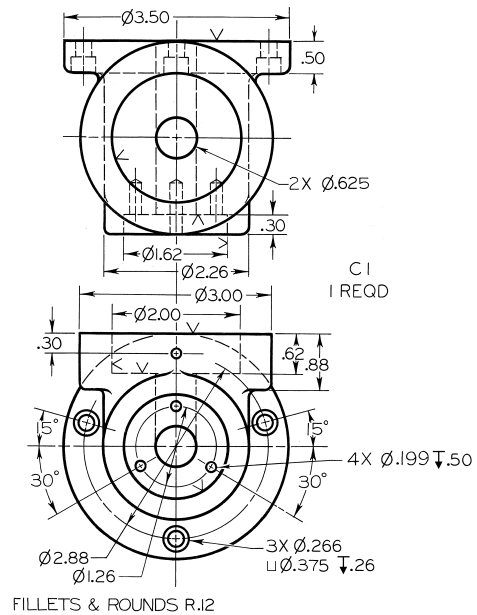
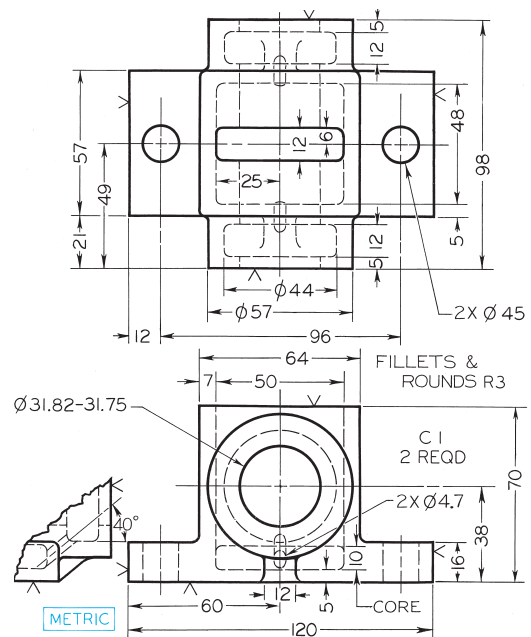


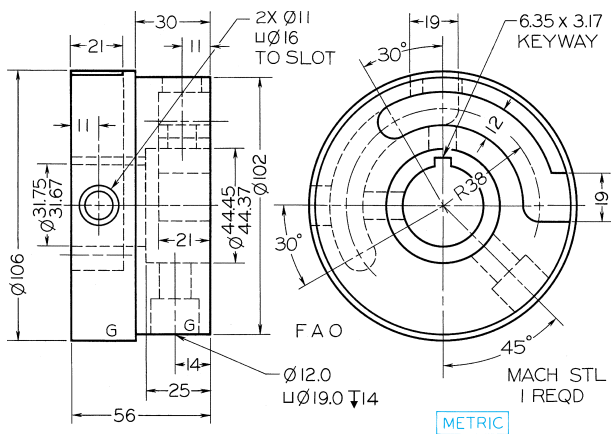
FIGURE 59 Hydraulic Fitting. Given: Front and top views. Required: Front and top views and right-side view in full section (Layout B-4).*



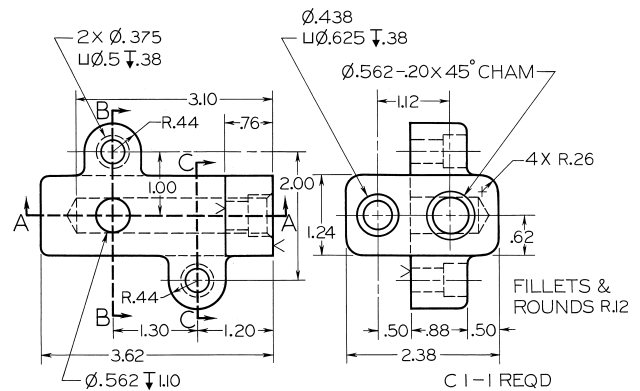
■ **FIGURE 60** ■ Auxiliary Shaft Bearing. Given: Front and top views. Required: Front and top views and right-side view in full section (Layout B-4).*

**Use metric or decimal-inch dimensions as assigned by the instructor.*

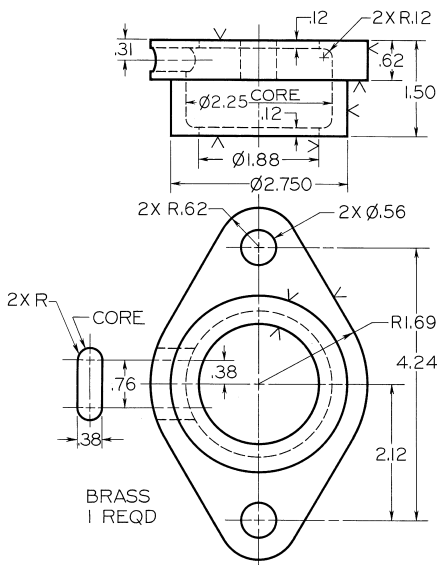
Sectional Views



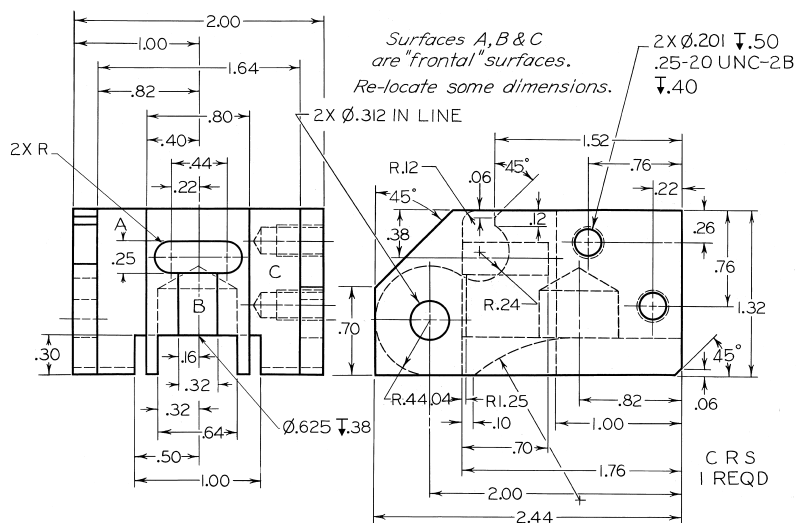
■ **FIGURE 61** ■ Traverse Spider. Given: Front and left-side views. Required: Front and right-side views and top view in full section (Layout B-4 or A3-4 adjusted).*



■ **FIGURE 63** ■ Bracket. Given: Front and right-side views. Required: Take front as new top; then add right-side view, front view in full section A-A, and sections B-B and C-C (Layout B-4 or A3-4 adjusted).*



■ **FIGURE 62** ■ Gland. Given: Front, top, and partial left-side views. Required: Front view and right-side view in full section (Layout A-3 or A4-3 adjusted).*



■ **FIGURE 64** ■ Cocking Block. Given: Front and right-side views. Required: Take front as new top view; then add new front view and right-side view in full section. Draw double size on Layout C-4 or A2-4 adjusted.*

*Layout A3-4 (adjusted) may be used. Use metric or decimal-inch dimensions as assigned by the instructor.