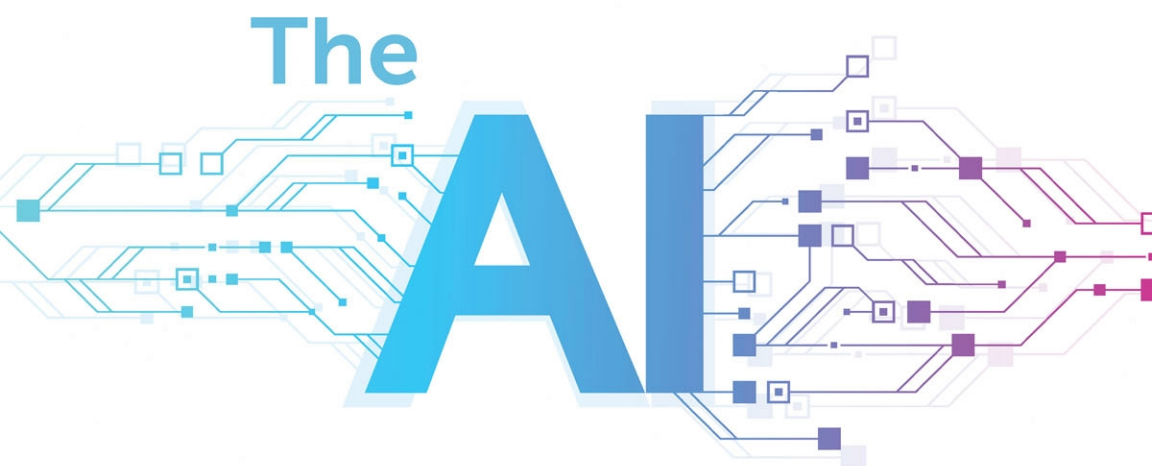


ELEVATING PRODUCTIVITY WITH **GENERATIVE AI**



REVOLUTION in **PROJECT MANAGEMENT**

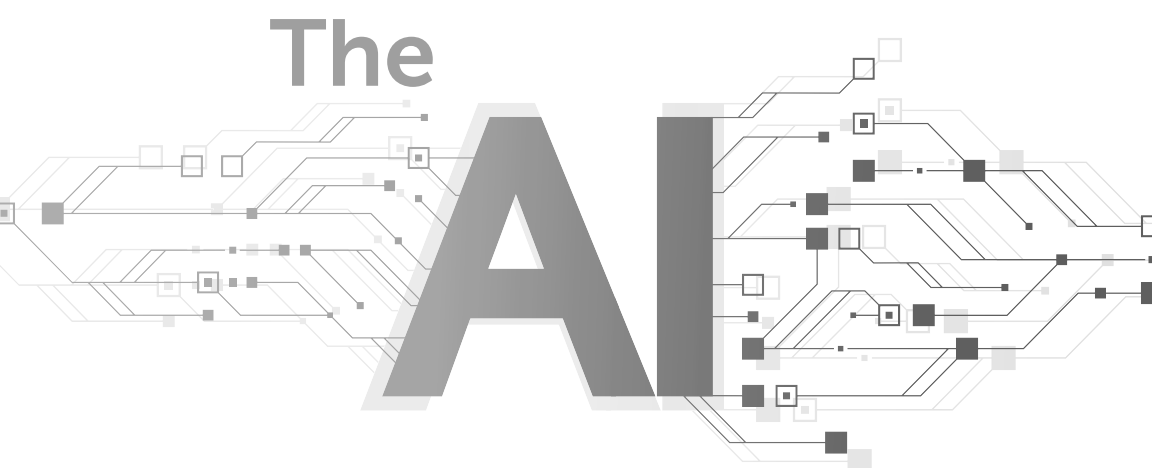


VIJAY KANABAR, PhD

JASON WONG

Foreword by **Ricardo Viana Vargas, PhD**

ELEVATING PRODUCTIVITY WITH **GENERATIVE AI**



REVOLUTION in **PROJECT MANAGEMENT**



VIJAY KANABAR, PhD

JASON WONG

Foreword by **Ricardo Viana Vargas, PhD**

With this information, AI can then generate a list of analogies to help bridge the understanding between both teams. Here's how that might look:

Engineering to Marketing Analogies:

Agile development: Think of agile development like a flexible content strategy. We plan, create, and improve our software iteratively, much like how you plan, publish, and optimize content based on its performance.

API: APIs are like collaboration partners for our software. They help our software interact with other applications, similar to how influencers help your content reach a broader audience.

DevOps: DevOps is our way of ensuring that the development and operations teams work smoothly together, similar to how you aim for seamless collaboration between content creators and social media managers.

Marketing to Engineering Analogies:

SEO: SEO is a set of practices that make a website more visible on search engines, similar to how well-written code makes a software application more efficient.

User persona: A user persona is a representation of our ideal customer, much like a use-case scenario represents an ideal path for our software's functionality.

Conversion funnel: The conversion funnel is a way to visualize the journey of a customer, much like a data flow diagram visualizes the journey of data through our software.

By creating such a shared lexicon and using these analogies in commu

But not all conflicts lead to disasters. When managed effectively, the conflict resolution process can lead to innovative solutions and a deeper camaraderie among team members. AI can play a transformative role in mitigating conflicts. It is impartial and has a rich set of solutions learned from previous conflicts that can help with decision-making.

AI can assist in conflict resolution by providing an unbiased perspective, identifying the root causes of the conflict, and suggesting potential resolu

AI will suggest a few steps to consider:

Define the Criteria: Clearly outline what criteria you're using to prioritize tasks. It could be urgency, ROI, effort needed, or how foundational the task is to other tasks. Make sure the criteria are clear, fair, and agreed upon by everyone.

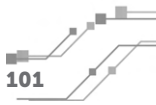
Rank Tasks Using the Criteria: Independently rank Task A and Task B using the agreed criteria. If possible, use a numerical system for objectivity.

Discuss Rankings in a Team Meeting: Have each team present their case with the rationale behind their rankings. This open discussion can lead to mutual understanding and even compromise.

Vote if Necessary: If the disagreement persists, consider a democratic approach where each team member votes after the discussion. This can help ensure everyone feels heard and part of the decision-making process.

As project manager, you should ensure the team understands that the goal is not about winning an argument but about finding the best way forward for the project.

The first step is to confront the issue. When an issue is identified and con



Discussion: Encourage a constructive dialogue between the teams. Try to identify common grounds and areas of disagreement.

Brainstorm Solutions: As a group, brainstorm possible solutions. Aim for options that address the concerns of both teams.

Decision-Making: Review the suggested solutions collectively and decide on an action. The decision could be reached by consensus or, if necessary, a vote.

TECHNICAL GUIDE See Technical Guide 3.3. The above solution deals with confronting issues head-on and is the recommended approach. Since conflict management is an important topic, we provide additional information and prompts about other conflict management approaches in the Technical Guide.

Using AI to Support Decision-Making

From setting strategic directions to choosing between alternative paths, project managers often face complex decisions that can impact the out

decrease the prevalence of certain diseases over time. It might require fewer resources and could be implemented faster.

Ideally, a combination of both approaches could be the most effective.

However, you need to consider your project's resources, timeline, objectives, and the specific needs of the community you're working with.

This gives you as a project manager objective, nuanced insights to inform your decision-making process. AI can also assist with decision-making in other ways. For example, when you're dealing with large amounts of data, AI can help summarize and interpret this data to facilitate understanding and decision-making. It can help draw out key trends, highlight significant findings, and provide an overall data summary, making it easier for you to make an informed decision.

"We have collected a lot of health data from our survey in the community. Can you help summarize it and highlight key findings?"

Absolutely, based on the data you provided, here are some key findings:

There is a high incidence of [disease X] in the [Y age group].

Most individuals lack access to [specific health-care service].

[Z percentage] of individuals are unaware of [particular health practice].

These findings suggest that there is a significant need for both health-care services and education in the community.

{Note that the brackets in the response would include the specific findings.}

"Based on your knowledge and understanding of similar projects, what are some potential risks we might face in our Global Health project, and how can we mitigate them?"

Several risks can potentially impact a global health project like yours. Here are a few, along with possible mitigation strategies:

Risk: Disease outbreak disrupting project activities. Mitigation: Develop a contingency plan that includes remote working arrangements and health and safety protocols.

Risk: Resistance from local communities. Mitigation: Ensure community engagement and awareness campaigns are part of the project to gain their acceptance and cooperation.

Risk: Resource limitations. Mitigation: Conduct regular resource planning and allocation reviews to ensure optimal use of available resources.

Scenario Planning: Project managers often need to consider multiple scenarios and their potential impacts on the project.

ChatGPT can help create or analyze these scenarios based on its vast knowledge:

“Can you help me understand the possible scenarios if we decide to extend the project timeline by six months?”

Here are a few possible scenarios and their potential impacts:

Scenario 1: The project scope is increased due to the extended timeline. While this could result in more comprehensive outcomes, it may also require more resources.

Scenario 2: Stakeholders might express concerns over the delay, which could impact their commitment and support. Regular communication and updates could mitigate this.

Scenario 3: The team might face fatigue due to the extended timeline, potentially impacting productivity. Regular team check-ins, breaks, and acknowledgment of their efforts could help maintain morale.

AI can aid in project performance analysis to help you make informed decisions. Using ChatGPT, you can ask for insights based on the perfor