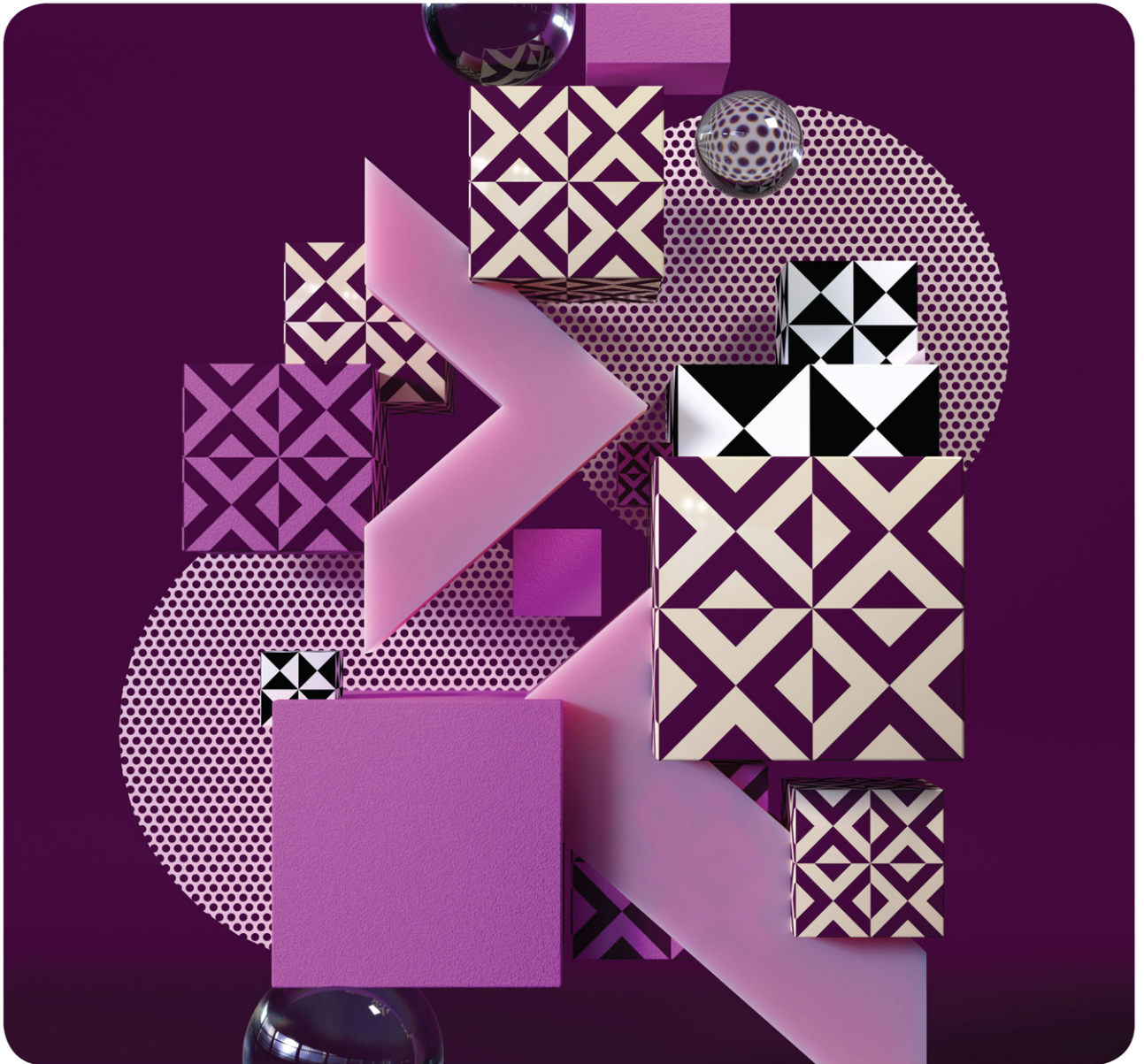




# Adobe Dreamweaver

2022  
release



## Classroom in a Book<sup>®</sup>

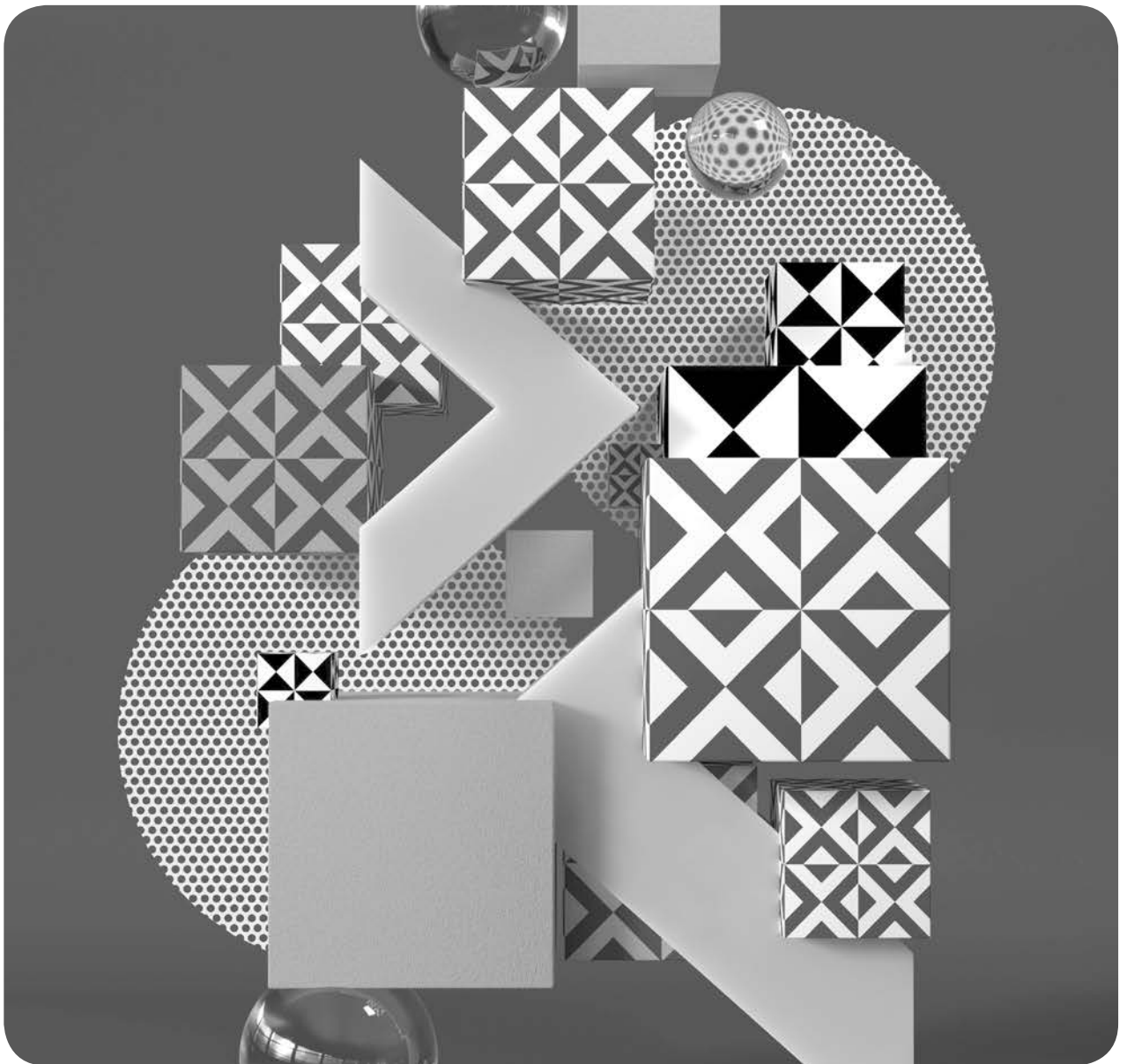
The official training workbook from Adobe

Jim Maivald



# Adobe Dreamweaver

2022  
release



## Classroom in a Book®

The official training workbook from Adobe

Jim Maivald

types, including PHP, XML, and SVG. Predefined layouts, templates, and frameworks can also be accessed from this dialog. Let's check out the options.

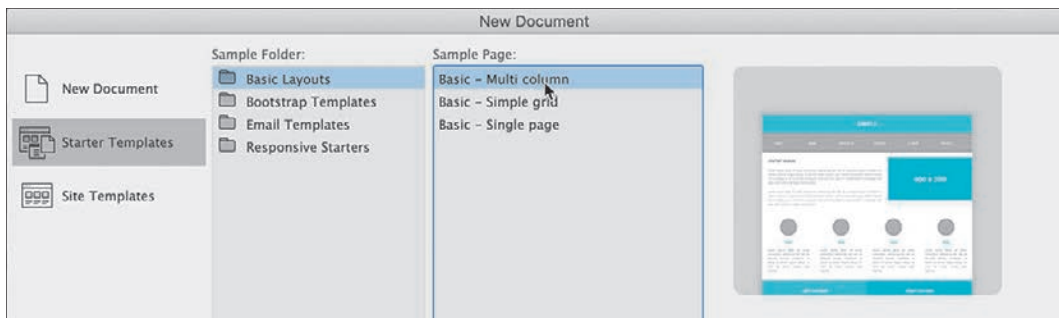
- 2 In the New Document dialog, choose Starter Templates > Basic Layouts.

The Starter Templates window of the New Document dialog displays three choices: Multi Column, Simple Grid, and Single Page.

At the time of this writing, Dreamweaver (2022 release) offers three basic layouts, six Bootstrap templates, four email templates, and three responsive starter layouts. The exact number and features of these layouts may change over time through automatic updates via Creative Cloud. The changes to this list may occur without notice or fanfare, so keep your eyes peeled for new options in this dialog.

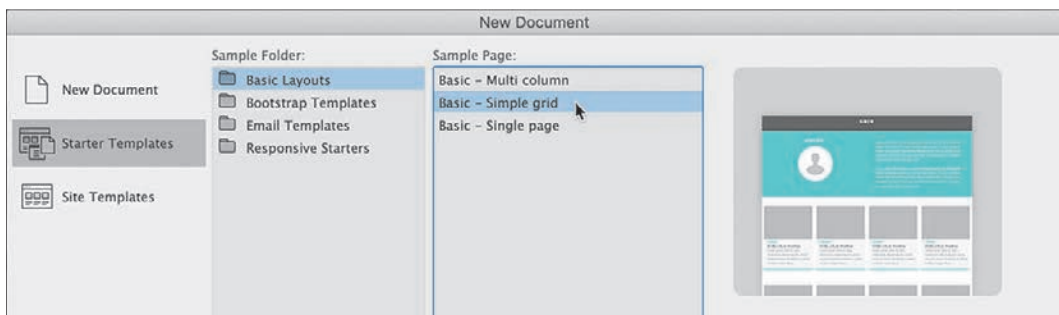
All the featured layouts are responsive designs built using HTML5-compatible structures and will help you gain valuable experience with this evolving standard. Unless you need to support older browsers (such as IE5 and IE6), there's little to worry about when using these newer designs.

- 3 If necessary, select Basic – Multi Column.  
Observe the preview image in the dialog.



A preview image shows the design of a multicolumn webpage.

- 4 Select Basic – Simple Grid.

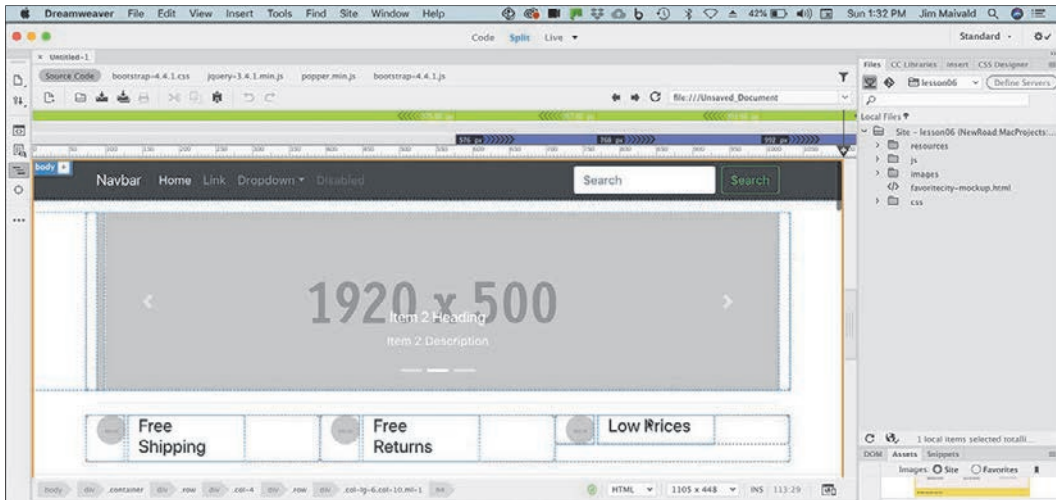


The preview image changes to depict the new grid-based design.

- 5 Select each of the categories and design options in turn. Observe each preview image in the dialog.

Each template offers a design appropriate for specific applications. After reviewing all the sample layouts, only the Bootstrap eCommerce template is close to the design of the Favorite City Tour mockup.

- 6 Choose Bootstrap Templates > Bootstrap eCommerce.
- 7 Click Create.



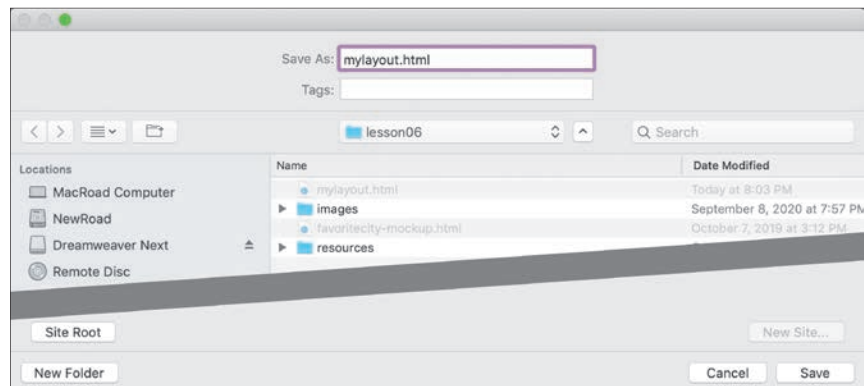
The file contains a one-column layout with navigation, body content, and footer components. Before we proceed, it's a good idea to save the file.

- 8 Select File > Save.

The first time you save a new file, the Save and Save As commands are identical. Once a file is saved, use the Save As command to save a file under a new name or in a different folder.

- 9 Name the file **mylayout.html** and save it in the root of the lesson06 folder.

► **Tip:** If necessary, click the Site Root button to navigate to the home folder of lesson06.



When the file is saved, it may not be obvious, but Dreamweaver automatically adds various resources—image placeholders, CSS, and JavaScript libraries—to the site folder to support the Bootstrap functionality of the template. You can see these new assets in the Files panel.

● **Note:** The Files panel will update automatically, but it may take a few moments.

If you examine the new webpage, you can see it has some similarities to the site mockup viewed earlier. In the following exercises, you will learn how to adapt this layout to make it match that design and to create the site template in Lesson 7, “Working with Templates.”

## Styling a predefined layout

Once you get the skills under your belt, it will be simple to build a webpage layout from scratch. For now, the Dreamweaver starter layouts provide a great place to jumpstart the process of building your site template.

- 1 If necessary, open **mylayout.html** from the lesson06 folder. Make the Dreamweaver document as large as the computer display will allow (at least 1200 pixels).

This webpage is based on a fully responsive Bootstrap starter template. The styling you see will change based on the width and orientation of the document window in Dreamweaver. To ensure you are obtaining the same results shown in this lesson, make sure the document window is at least 1200 pixels in width unless otherwise directed within the exercise. Check out Lesson 1, “Customizing Your Workspace,” to learn how to resize the window.

The first step is to make this generic layout take on some of the personality of the proposed design. Normally, you would have to do that the old-fashioned way, by editing the CSS by hand. But since the layout was mocked up in Adobe Photoshop, Dreamweaver has a built-in feature called Extract that can use the site mockup to create some of the desired styling for you.

Extract was added to Dreamweaver a few versions ago. It is a feature hosted by Creative Cloud and accessed through a panel in the program.

- 2 Select Window > Extract.

The Extract panel appears. The panel connects to your Creative Cloud account and will display any Photoshop files in your assets. To use the site mockup, you first have to upload it to the Creative Cloud server.

● **Note:** Before accessing the Extract panel, you must have the Creative Cloud desktop app running and be logged in to your account.

● **Note:** The Extract panel may appear different than pictured the first time you use it.

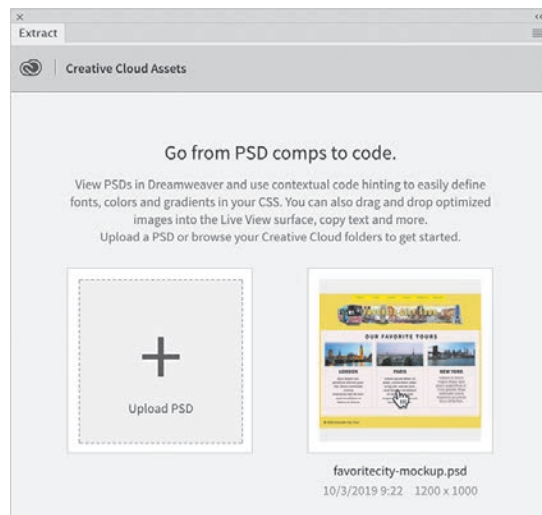
- 3 Click the option Upload a PSD.



A file dialog appears.

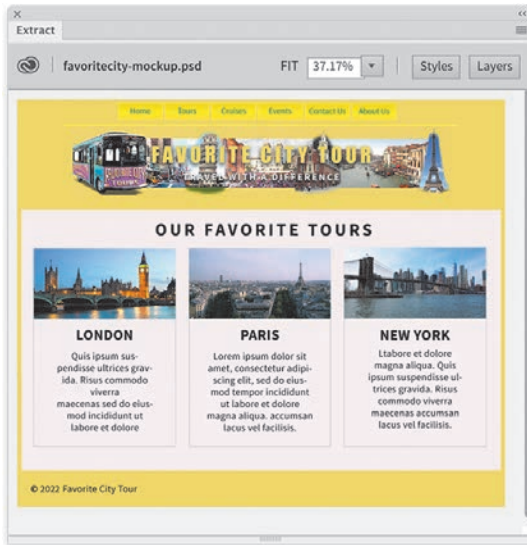
● **Note:** If the Photoshop mockup is grayed out, click the Options button and select .psd from the file type drop-down menu.

- 4 Select **favoritecity-mockup.psd** in the lesson06/resources folder and click Open.



The file is copied to your Creative Cloud Files folder on your computer, which is then synced to your Creative Cloud remote storage. Once the file is uploaded, it should be visible in the Extract panel.

- 5 Click to load **favoritecity-mockup.psd** in the Extract panel.



The mockup loads and fills the entire panel. Extract enables you to access and derive styling information, image assets, and even text from the mockup.

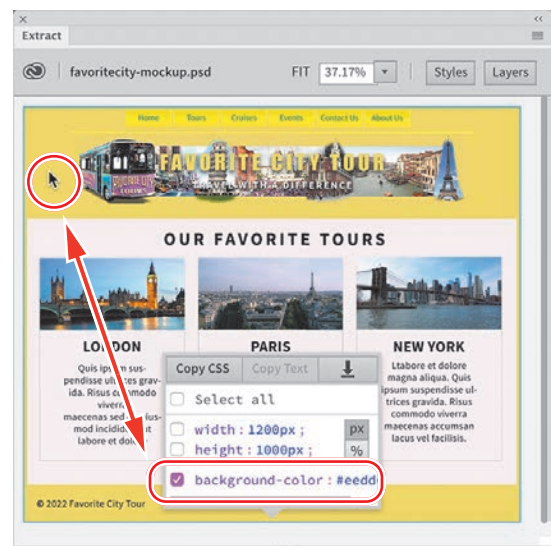
## Styling elements using the Extract panel

The Extract panel can obtain image assets and styling data from the Photoshop file. In this exercise, we're interested only in the styling data. Let's start at the top and work down the page. First, we'll grab the background color.

- 1 In the Extract panel, click the yellow background of the page.

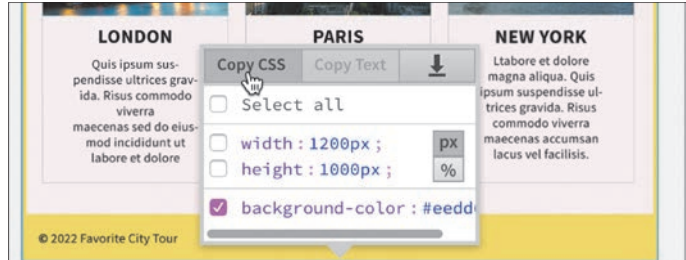
When you click in the preview image, a pop-up window appears. The pop-up window allows you to select the data you want to obtain from the mockup.

The buttons at the top of the pop-up indicate what data is available from the selected component, such as CSS, text, and image assets. Notice that the Copy CSS and Extract Asset buttons are selectable, indicating that styling and image assets are available. The Copy Text option is grayed out, indicating that no text content is available to be downloaded.



The window displays the CSS styling as a list with checkboxes. When you select a checkbox, those specifications will be copied to program memory. The CSS styling that is displayed includes properties for width, height, and background color. You can select all the settings or only the ones you want to use.

- 2 If necessary, deselect width and height.  
Select background-color.
- 3 Click the Copy CSS button.



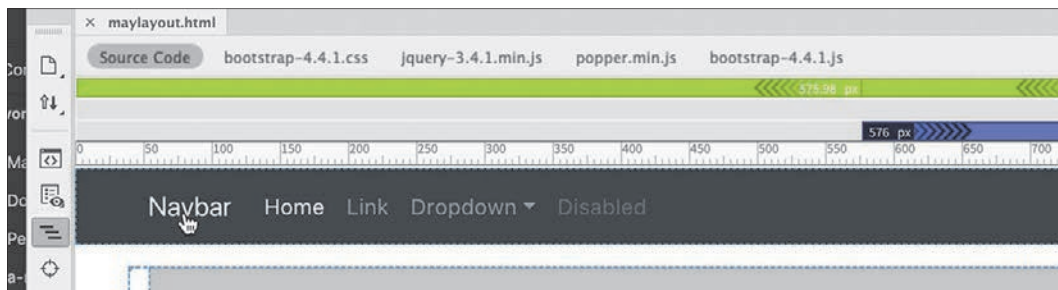
Once you've copied the settings, you can then apply them directly to the layout in Dreamweaver. The easiest way to use this data is via the CSS Designer.

- 4 Select Window > CSS Designer to open or display the panel, and enable the Show Set option.  
Click the All button, if necessary.

First, we want to apply the specifications to the top navigation menu in the current layout. You can target the menu by selecting the appropriate rule in the Selectors pane or by selecting the actual element in Live view.

The current layout is fully responsive so that the styles are applied based on the width and sometimes the orientation of the document window. To obtain the correct styling, you have to make sure the document window is showing the full desktop version of the design at a minimum of 1200 pixels.

- 5 In Live view, click to select the top navigation menu.



In some cases, when you select an element in the document window, Dreamweaver does not select the desired one first. To ensure the proper element is targeted, you should use the tag selector interface.