



# **LEARN**

# **Adobe InDesign CC**

for **Print** and **Digital Media Publication**

---

**SECOND EDITION**

Adobe Certified Associate Exam Preparation

Jonathan Gordon  
*with Conrad Chavez and Rob Schwartz*



# LEARN

# Adobe InDesign CC

for **Print** and **Digital Media Publication**

---

## SECOND EDITION

Adobe Certified Associate Exam Preparation

Jonathan Gordon  
*and* Conrad Chavez  
*with* Rob Schwartz





**Figure 2.72** Setting a leading value to reduce the space between lines

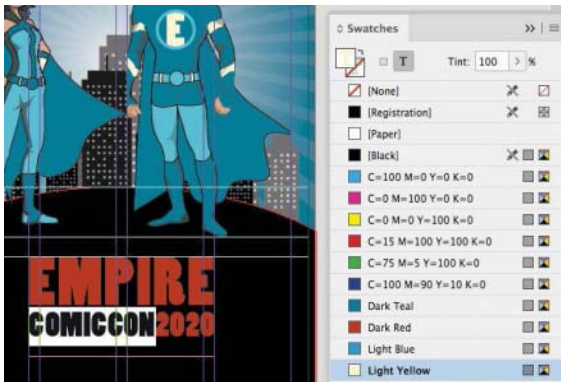
There's a lot of space between the two lines of text, so you'll reduce the space by adjusting the **leading** value, which is the vertical space between lines. (If you wanted to adjust the space between entire paragraphs of text, you'd adjust **paragraph spacing** instead.) The leading value you currently see in the Control panel is in parentheses, indicating that it's automatic leading, which changes as you change the type size. You're about to set a manual leading value that will no longer change on its own.

- 10 Select the COMICCON2020 text, and in the Control panel, set the leading value to **66pt** (Figure 2.72).

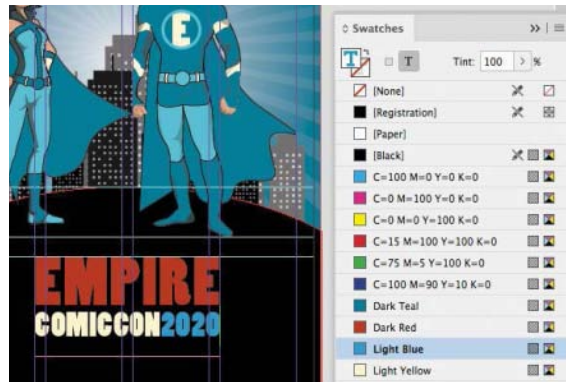
## Applying Colors to Text

Now it's time to apply the color swatches you created earlier to the text you just typed:

- 1 Select the COMICCON text.
- 2 In the Control panel, click the arrow next to the Fill icon, and apply the Light Yellow swatch from the menu that appears (Figure 2.73).
- 3 Select the 2020 text, and using the Fill icon menu in the Control panel, apply the Light Blue swatch (Figure 2.74).



**Figure 2.73** Applying Light Yellow to the selected text



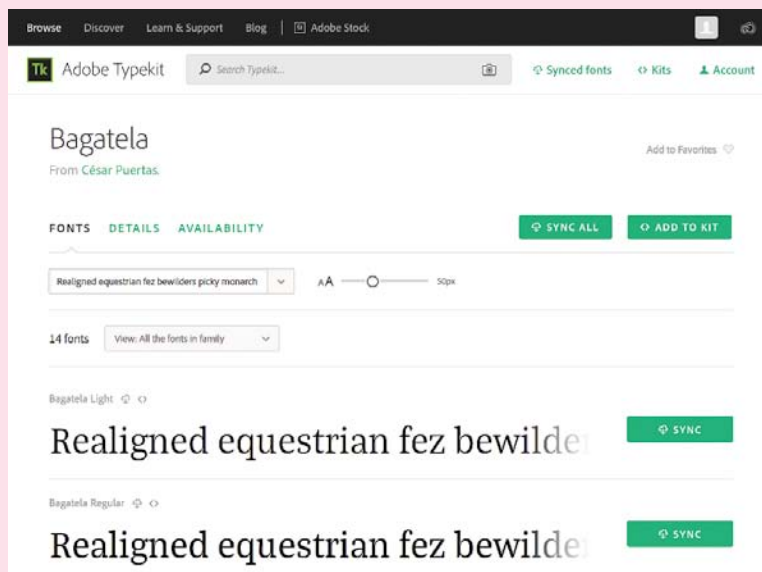
**Figure 2.74** The ComicCon text filled with Light Yellow, and the 2020 text filled with Light Blue

## USING TYPEKIT FONTS

Your computer's operating system comes with a set of fonts, and the Creative Cloud installer adds more fonts when you install InDesign. To make your designs unique so that they stand out, you'll often be on the lookout for new fonts. As part of your Creative Cloud membership, you have access to Adobe Typekit fonts that can be used across web and desktop designs, and many are available for both desktop and mobile use. (Adobe Typekit may not be available on computers in some schools and organizations.)

To use Typekit fonts in your designs, choose **Type > Add Fonts From Typekit**. You can also choose **Add Fonts From Typekit** from the font menu in the Control panel or Character panel. You can try your own preview text, inspect different weights and styles, and if you want to use the font, click **Sync** or **Sync All** and the fonts will be synchronized to your computer, where you can use them in InDesign and other applications.

The Typekit web page opens in your default web browser (**Figure 2.75**).



**Figure 2.75** The Typekit web page, where you can evaluate fonts and sync them to your computer

- 4 Make sure there is not a third line in that text frame by clicking after the last character and pressing the Right Arrow key. If the blinking text insertion point moves to the next line, press the Backspace (Windows) or Delete (macOS) key until the text insertion point is after the last character in 2020 and still on the same line.
- 5 Choose Object > Fitting > Fit Frame to Content (**Figure 2.76**). This pulls up the bottom edge of the text frame until it meets the bottom of the last line of text and is an instant way to get rid of unneeded space at the end of a text frame.

**Figure 2.76** Cleaning up extra space in a text frame

**TIP**

Although the colors you see on your computer display do not always reliably represent how those colors will appear in print, it is possible to produce a much closer match using advanced color-management methods such as display calibration and soft-proofing. Ask your commercial printer if they have advice on which methods work best with their InDesign workflow.



If there were one more empty line of text, Fit Frame to Content would have held open the text frame. That's why you checked for an unused last line in step 4.

- 6 With the Type tool, click between COMIC and CON and type a space. Also add a space between CON and 2020 (**Figure 2.77**).



**Figure 2.77** Adding spaces to make the words more distinct

# Moving and Sizing Text

★ ACA Objective 4.2

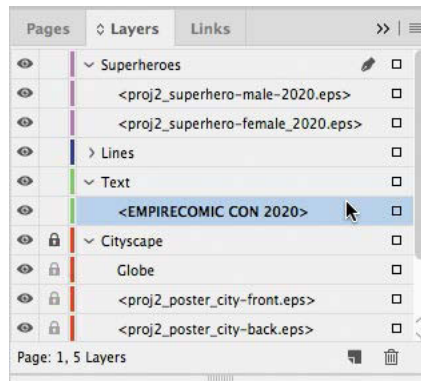
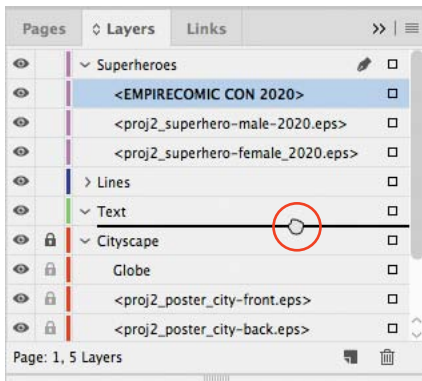
▶ **Video 2.14** Moving and Sizing Text

To complete the poster, there are a few more lines of text to add, along with some horizontal rules used as compositional elements.

- 1 If the document is in Preview mode, switch to Normal screen mode.
- 2 Magnify and scroll the document window to focus on the empty area below the existing text, using whatever methods you prefer (such as the Zoom tool, the magnification commands on the View menu, or the keyboard shortcuts for those commands).
- 3 In the Layers panel, expand the Text layer. Notice that the Text layer doesn't contain any objects.


When you created the text frame, the Superheroes layer was selected, so the text frames were created on the Superheroes layer.

- 4 In the Layers panel, drag the text frame you created from the Superheroes layer to the Text layer (Figure 2.78).



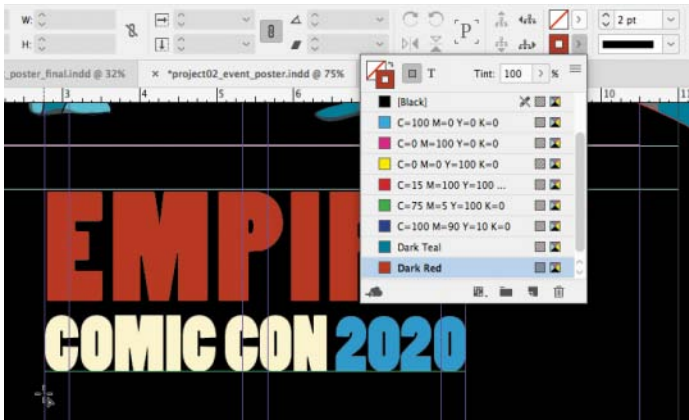
**Figure 2.78** Correcting the object stacking order

Next you'll draw a line, which you'll want to create on the Lines layer.

- 1 In the Layers panel, select the Lines layer.
- 2 In the Tools panel, select the Line tool (  ).
- 3 In the Control panel, set the following options (**Figure 2.79**):
  - Click the arrow next to the Stroke icon, and choose Dark Red from the menu that appears.
  - Click the arrow next to the Fill icon, and choose None.
  - Set the stroke width to **2pt**.



**Figure 2.79** Setting up object formatting in the Control panel



- 4 Position the Line tool slightly below the text frame, at the same column guide where the text frame starts, and Shift-drag to draw a line as wide as the text frame (Figure 2.80).

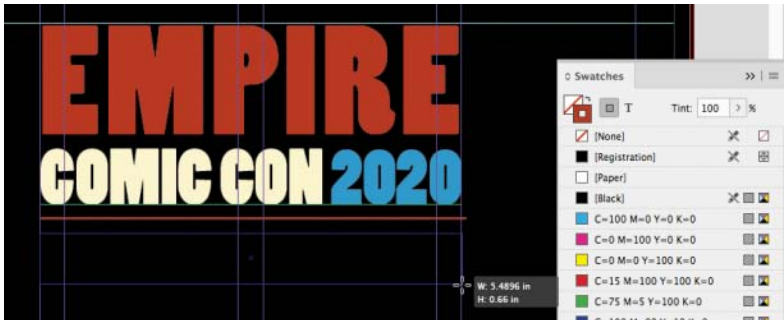
**Figure 2.80** Drawing a line under the text



The next frame will contain some information about the convention.

- 1 Select the Text layer.
- 2 Select the Type tool, and draw a new text frame under the line, the same width as the line and text frame above it and about 0.65 inches tall (Figure 2.81).

**Figure 2.81** Creating another text frame



- 3 In the Control panel, set the following options:
  - From the font menu, choose Poplar Std Black (or another heavy display font).
  - Set the font size to 33pt.
  - Click the arrow next to the Fill icon, and choose the Light Yellow color swatch.
  - Make sure the Justify All Lines button is selected.
- 4 With the Type tool, click in the text frame and type @PEACHPIT CONVENTION CENTER (Figure 2.82).



Figure 2.82 Typing the location of the convention

- 5 With the Selection tool, double-click the middle handle at the bottom of the text frame. This is a shortcut for fitting the frame to the text content, eliminating unused space at the bottom (Figure 2.83).



Figure 2.83 Unused space removed