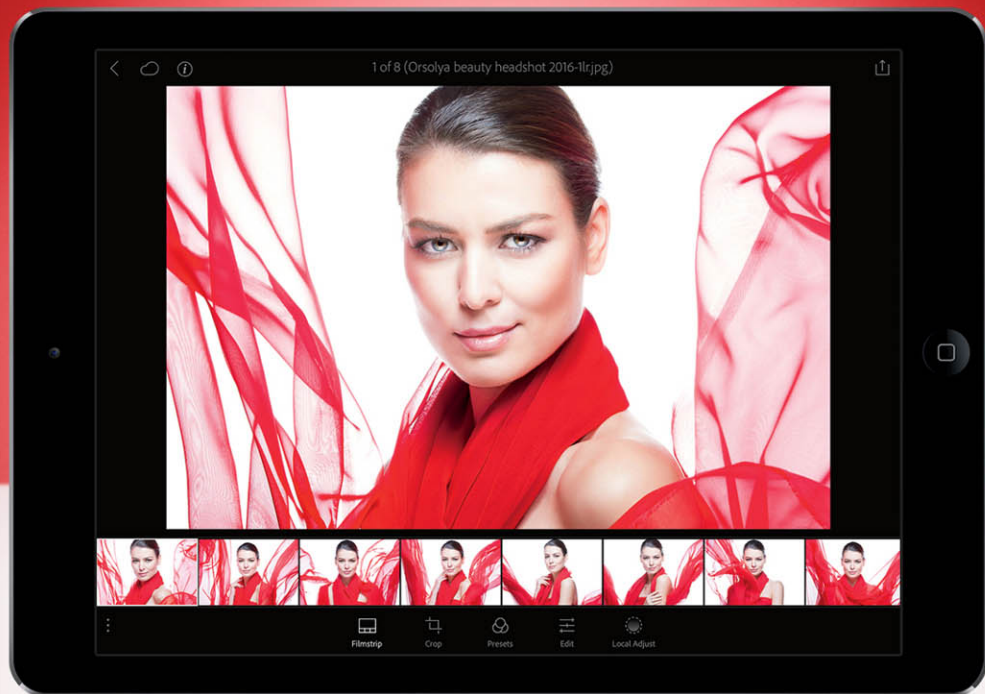


The Lightroom Mobile Book

How to extend the
power of what you
do in Lightroom to
your mobile devices

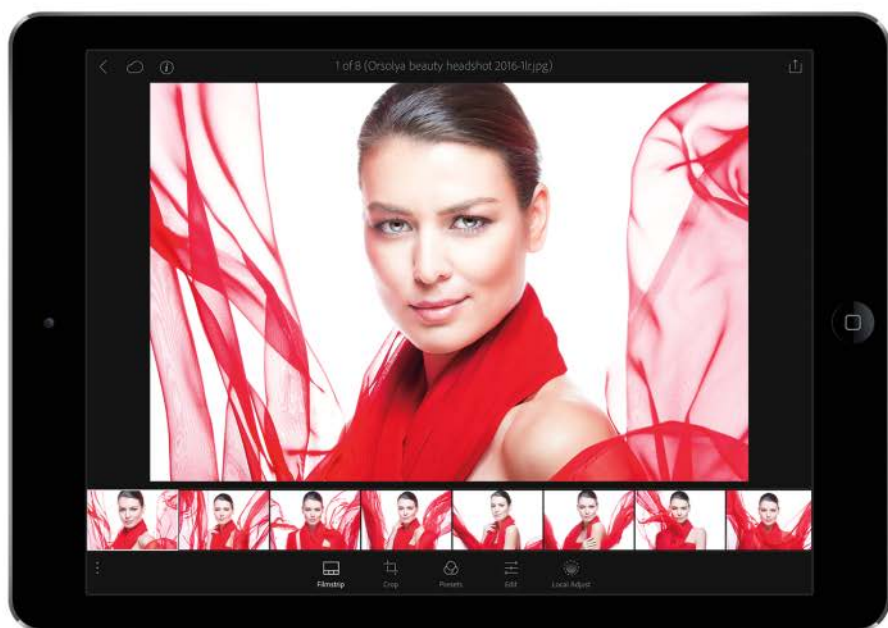


Scott Kelby

Author of the top-selling digital photography
book ever—*The Digital Photography Book*, part 1

The Lightroom Mobile Book

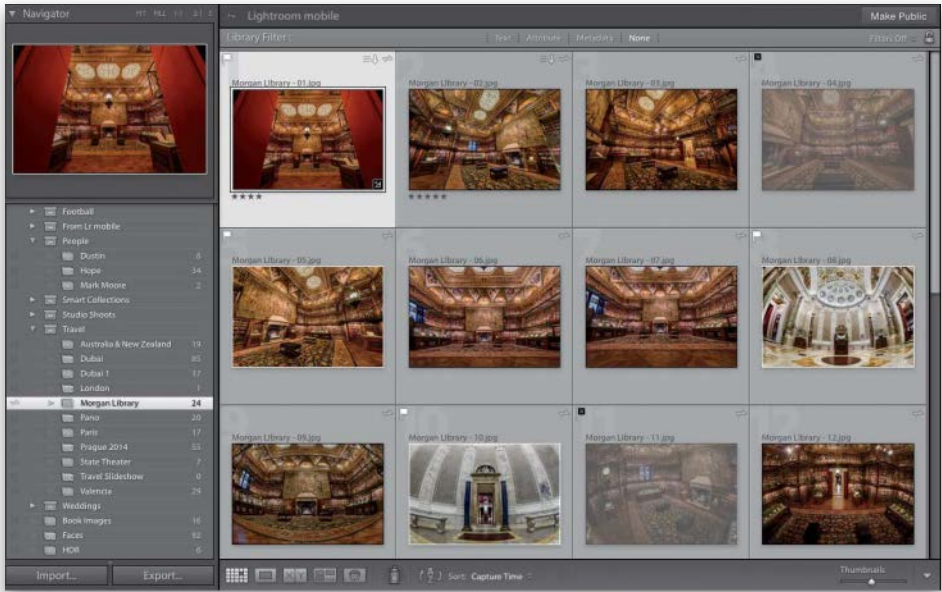
How to extend the
power of what you
do in Lightroom to
your mobile devices



Scott Kelby

Author of the top-selling digital photography
book ever—*The Digital Photography Book*, part 1

Seeing Your Picks and Star Ratings on Your Desktop



When you go back to Lightroom on your computer, you'll notice that all the flags (Picks and Rejects), plus any star ratings, have been synced back to your collection there.



SHUTTER SPEED: 1/800 sec | F-STOP: f/3.5 | ISO: 800 | FOCAL LENGTH: 14mm | LOCATION: Dubai, United Arab Emirates

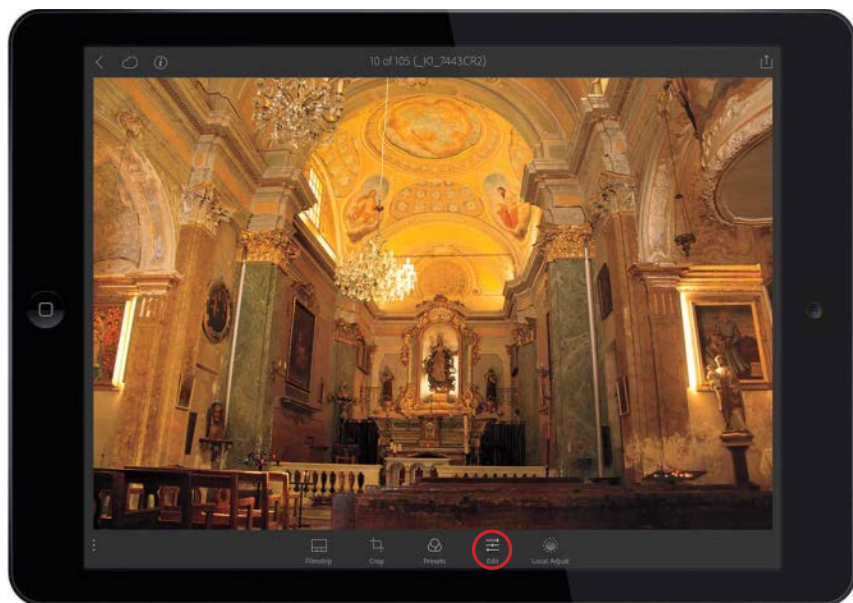
Chapter Three

Editing Your Images

It's Lightroom Mobile's Version of Lightroom's Develop Module

I have to admit, I've been really impressed at how much of Lightroom's Develop module has made its way over to Lightroom Mobile. Almost all of the things you've come to expect in Lightroom Desktop, from the entire Basic panel, the Tone Curve panel, and the Color/B&W panel, to Split Toning and presets, and even Local Adjustments, like the Graduated Filter and the Radial Filter, are here—but, for reasons I've yet to understand, Adobe decided to change their names to Linear Selection and Radial Selection. Those are the only two things that I can think of that have different names in Lightroom Mobile for the same tools in Lightroom Desktop. Well, with one big exception: In Lightroom Desktop, the panel with the Dehaze filter is named Effects, and that panel hasn't made it over to Lightroom Mobile, but Dehaze has. But, in Lightroom Mobile, they changed the name to the Japanese phrase “shinnen omedetō gozaimasu,” which roughly translates to “Godzilla put an omlette on my shin.” Now, if you ask me, that's a weird name for the Dehaze slider. Personally, for the sake of clarity, I would have named it the more obvious “yakushite kudasai,” whose literal translation is “I think a yak just pooped on your kudasai,” which I think we all can agree would be a far better name, especially for new users.

Editing Your Images



To edit an image using the same controls as you would in Lightroom on your computer, just tap on an image in Grid view to enter Loupe view (seen here), and then tap on the Edit icon in the Action options at the bottom of the screen. This brings up the same controls you have for editing in Lightroom's Basic panel on your computer (it's all there—everything from White Balance to Exposure; Shadows to Whites and Blacks; Clarity to Vibrance; it's all there), in the same order, they just run across the bottom of the screen instead of along the right side like they do on your computer. Adobe calls each of these controls "adjustment tiles," so you tap on a tile to access its features (or slider).

Setting the White Balance



This image has a yellow tint to it (as seen on the previous page), so we have to fix the white balance. In the row of adjustment tiles across the bottom, tap on the White Balance tile and a menu pops up with a list of White Balance presets and a thumbnail preview of how each would look if applied to your image. Just taking a quick glance at these, it looks like the Fluorescent preset would look best (well, at least the yellow tint is gone with it), so I tapped once on the Fluorescent preset to apply it (as seen here).

Using the Temperature and Tint Sliders



The nice thing about applying a White Balance preset like we just did on the previous page is if it's not right on the money, you can still tweak it. In this case, it might be a little too cool now, but you can just tap on the Temperature tile and a slider appears right above the row of tiles. Just tap-and-hold on the little knob on the slider (seen circled in red here) and it works just like the sliders in regular ol' Lightroom on your computer—drag to the right to make the white balance warmer; to the left to make it cooler (you'll notice that the slider is colorized here, too, with blue on the left and yellow on the right). In this case, I dragged a little to the right, so it's not so cool (the Temperature reading was 3800K, but now it's up to a little warmer 4437K).