



THE OFFICIAL



Joomla!™

{book}

Jennifer Marriott
Elin Waring

Foreword by Andrew Eddie



The Official Joomla!™ Book

- *Beez*: A standard three-column layout with left and right columns that will collapse, meaning the left and right columns will not display if they have no content in them, allowing the main body content to expand into the space where they would be. It was designed to be a template that uses Web and accessibility standards, which also demonstrates the new function in Joomla! 1.5 of being able to easily change the default layouts without changing core files by using template overrides. It has one color scheme that uses a pink/purple monochromatic color scheme with gray as an accent color. It is designed to be a fluid width with a maximum width of 1,000 pixels, which means it will contract and adjust to fit screen resolutions that are less than 1,000 pixels wide.

Customizing the Default Template Beez

Built into Joomla's administrator back end is the ability to edit template files without any other tools or additional software. With that being said, having a plain-text editor can make it much easier to edit the files, because you can use the added functionality of "find and replace" to edit multiple instances of a change at one time.

Some examples of good text editors to use are Notepad++ (a GPL licensed and free text editor for Windows) and TextWrangler (a free text editor for Mac). A search in any of the search engines will help you find those software programs to download. Follow the instructions to install them. For the demonstrations in this chapter, we will be referencing TextWrangler because we work on a Mac. Windows users should be able to find the editor functions that are referenced in basically the same steps. If you have difficulty, please reference the help files that come with the software you are using.

Another helpful program to use is a File Transfer Protocol (FTP) program. FTP programs allow you to connect to your Web site's server, allowing you to view the files that are on your server and download and upload files. A good example of a free and open source FTP program is FileZilla. It works on both Windows and Mac computers.

Also helpful when editing and designing templates is an extension for the Firefox browser called Firebug. Firebug allows you to examine the code of a Web page to see what code is affecting areas or items on a page. It also allows you to edit this code live while you are viewing it to test what your changes will affect. If you do not use Firefox as a browser but plan on doing a lot of template editing, it is a good idea to have a copy of Firefox installed. Internet Explorer has some tools that can aid in Web site development, as do Chrome and Safari. It is also helpful to have multiple browsers installed on your computer to help you see whether your Web site is consistent across various browsers. There are also some paid services for comparing renderings across browsers, but they are not more useful for basic sites than having the major browsers installed on your own computer.

The first step to customizing any default template that is distributed with Joomla! is to make a copy of template to work with. Making a copy of the template and giving it a new name will prevent any changes you make from being overwritten by any updates that may be done to the template when you perform and update to Joomla! To make a copy of a default template, you can use the same File Manger that should be part of your hosting control panel, as was used in Chapter 3 when installing and configuring Joomla!.

to create a copy of the Beez template files and rename the new template to a name of your choosing.

Log in to your hosting account, and navigate to your File Manager. This should open a directory listing of your Web site files. Navigate to your template folder. Once you are in the template folder, use the New Folder (1) function, as shown in Figure 5.1, to create a new folder for your template files. Name this folder something that is relevant to you. In Figure 5.1, the name used is *mynewtemplate* (2).

Once you have created the new folder for your new template, all the files from the Beez template need to be copied to the *mynewtemplate* folder. Navigate to the *beez* template folder. Inside that folder, you will see a series of folders and files, as shown in Figure 5.2. Using the “Select all” function (1), you can select all the files and folders inside the *beez*

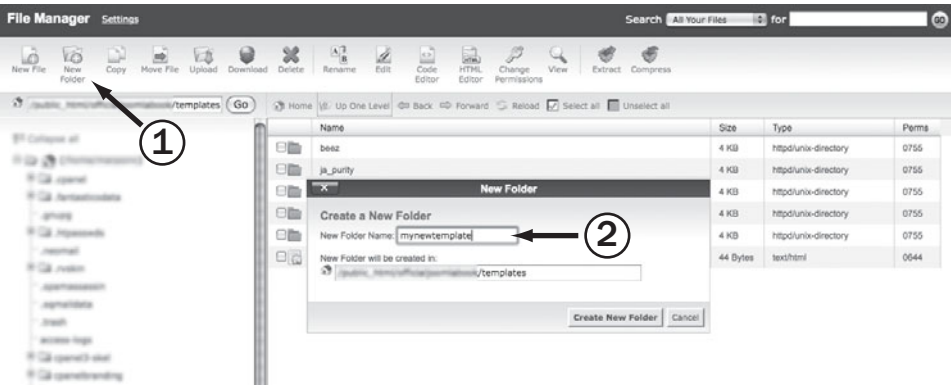


Figure 5.1 Create a new folder for your template files.

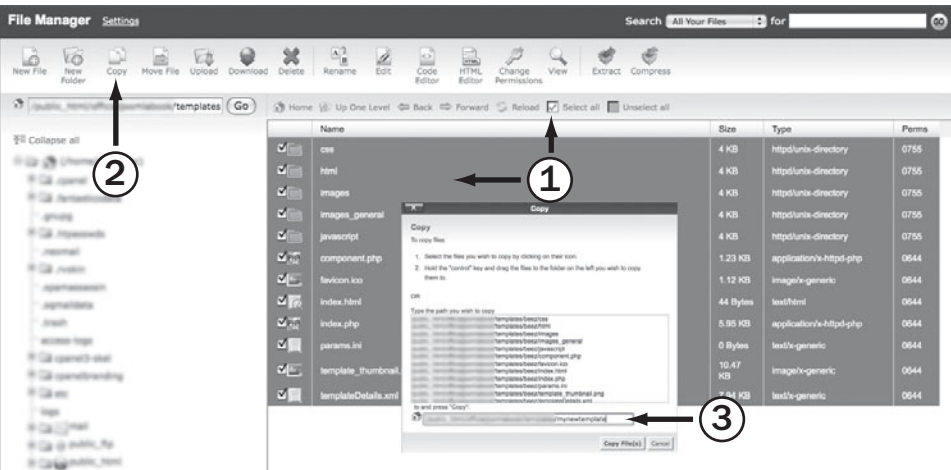


Figure 5.2 Copy Beez template files to the new folder, mynewtemplate.

folder, and then using the Copy function (2), you will be shown a new pop-up window that asks you to select the directory you want to copy the files to. Enter the name of your new template folder as shown (3), and then click Copy File(s).

Once all the files from *beez* have been copied to the *mynewtemplate* folder, the last step to finish duplicating the template is to rename the template in the *templateDetails.xml* file. You can edit this file using the Edit function in File Manager by navigating to the *mynewtemplate* folder and then selecting the *templateDetails.xml* file. You can click the Edit button on the top File Manager menu, or you can right-click the file and select Edit from the context menu, as shown in Figure 5.3. This will open the file for editing.

When the file has opened in the editor, look for the `<name>beez</name>` line near the top of the file. Figure 5.4 shows where you change the word *beez* to *mynewtemplate* in the XML file.

After you have changed the template name, click Save Changes at the top of the File Manager Edit screen. This will save the file and return you to the File Manager.

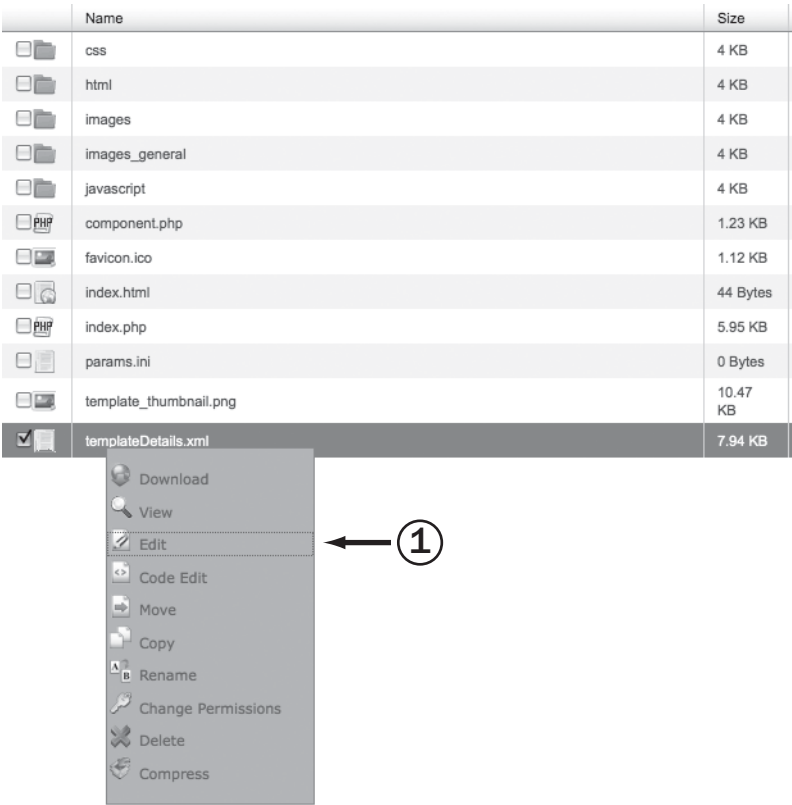


Figure 5.3 Opening the templateDetails.xml file for editing to change the name of the template

```
<?xml version="1.0" encoding="utf-8"?>
<!DOCTYPE install PUBLIC "-//Joomla! 1.5//DTD template 1.0/EN" "http://www.joomla.org/xml/dtd/1.5/template-install.dtd">
<install version="1.5" type="template">
  <name>mynewtemplate</name>
  <creationDate>19 February 2007</creationDate>
  <author>Angie Radtke/Robert Deutz</author>
  <authorEmail>joomla@run-digital.com</authorEmail>
  <authorUrl>http://www.run-digital.com</authorUrl>
  <copyright></copyright>
  <license>GNU/GPL</license>
  <version>1.0.0</version>
  <description>Accessible template for Joomla 1.5</description>
  <files>
    <filename>css/layout.css</filename>
    <filename>css/position.css</filename>
    <filename>css/template.css</filename>
    <filename>css/ieonly.css</filename>
    <filename>css/ie7only.css</filename>
    <filename>css/print.css</filename>
    <filename>css/general.css</filename>
    <filename>css/index.html</filename>
    <filename>css/template_rtl.css</filename>
  </files>
</install>
```

Figure 5.4 Changing the template name in the templateDetails.xml file

When you install Joomla!, the default template that is active is Milkyway, configured to use the blue color scheme. Log in to the administrator back end. In the upper-right corner of the screen there is a small menu/indicator bar, as shown in Figure 5.5 and detailed here.

- **Preview:** Clicking this will open a new tab or browser window, depending on your browser, to show the front end of the Web site.
- **Mail icon with a number beside it:** The number will indicate whether there are any messages for the super administrator(s). Clicking the number will take you to the Messages screen.
- **People icon with a number beside it:** The number will indicate how many people are logged into the site at the current time. You can also see exactly who is logged into the site and what their user group is by clicking the Logged in Users information box located on the control panel.
- **Logout:** Clicking this will log you out of the administrator back end.

In this chapter, we rely heavily on being able to switch between the administrator back end of the Web site and viewing the front end of the Web site to assess the changes we are going to be making. Click Preview to open another browser window or tab in your browser, showing the front end of your site. It should show the Web site you have configured with the edited sample content and the template Milkyway with the blue color scheme. Return to the window or tab that shows your administrator back end.

Once you are back to the administrator control panel, we will start by changing the default template from Milkyway to your copy of Beez *mynewtemplate* by navigating to the Extensions menu and clicking Template Manager. This will open the Template Manager screen, as shown in Figure 5.6. To select a template, you must select it by clicking the



Figure 5.5 Menu/indicator bar

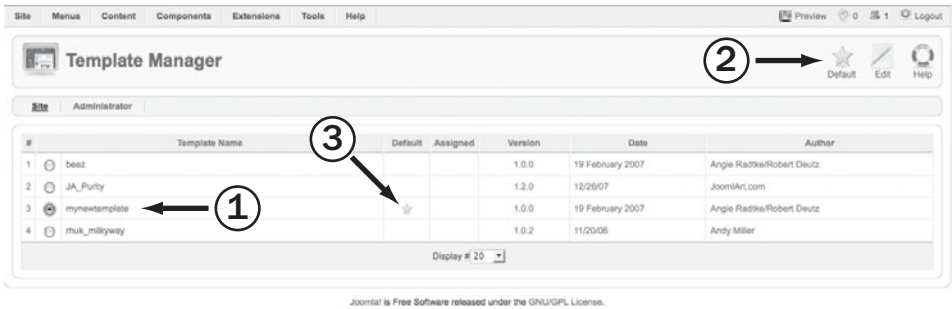


Figure 5.6 Template Manager screen

radio button beside the template name (1). Then you can select the action you want to perform in the upper-right corner of the screen by clicking Default or Edit (2).

- *Default*: Makes the template you have selected the default template of your site.
- *Edit*: Takes you to the template editing screen, showing you the editable parameters of the template if it has them. Also allows you to assign a template to a specific menu item and gives you the option of opening the actual template files for editing.

At this time, click the radio button beside the copy of Beez *mynewtemplate*, and then click Default. The default template is signified by a gold star in the Default column (3). There can be only one default template at any given time.

Beez Color Scheme

Once you have made your new template the default template, return to the tab or window that shows the front end of your Web site, and refresh or reload the page. You should now see the copy of the Beez template applied to the Web site.

Beez uses a monochromatic color scheme in a pink/purple color spectrum, along with some gray/charcoal accents, as shown in Figure 5.7. (If this image is being shown as a black-and-white image in your copy of this book, please go to *The Official Joomla! Book* Web site at <http://officialjoomlabook.com> to view the color version of this image.)

As you hover your mouseover menus and links on the screen, you can see certain effects such as color changes when you “roll over” a menu item (switches to gray) or that link colors change to indicate that you are hovering over a link (switches to white text on a pink/purple background).

Chapter 2 discussed color schemes, what they are, and how to design a color scheme. For demonstration purposes, we will be changing the Beez color scheme from a pink/purple monochromatic color scheme with gray accents to a blue color scheme, leaving the gray accents, as shown in Figure 5.8. (If this image is being shown as a black-and-white image in your copy of this book, please go to *The Official Joomla! Book* Web site at <http://officialjoomlabook.com> to view the color version of this image.)

BEEZ COLOR SCHEME



Figure 5.7 Beez color chart

BLUE COLOR SCHEME



Figure 5.8 Blue monochromatic color chart

From the administrator back end, navigate to the Extensions menu, and click Template Manager. Click the radio button beside the name of the new template, and then click the Edit icon in the upper-right corner of the Template Manager. This will open the template-editing screen, as shown in Figure 5.9.

The template edit screen has a number of menu items.

- **Preview:** This allows you to preview your site inside the Joomla! administrator back end. Once in the preview screen, you have the ability to click Back to return to the template-editing screen.
- **Edit HTML:** This opens the Template HTML Editor, which shows the template's *index.php* file in an editable text box. Be very careful when editing the *index.php* file. Missing code or incorrectly placed code can break your site. If you do want to edit the *index.php* file, it is a good idea to make a copy of the code it contains so that you can return it to the original state if it is not working correctly after editing. One way to do this is to copy the whole file into a file in your text editor